

# **Technical interface – Distribution of data from the Incomes Register 2020**

---

**Incomes Register Unit**

## Version history

Version	Date	Description
1.0	05/11/2019	Published a new version of the document, which includes the annual changes for 2020. Added voluntary query criterion Occupational accident insurance policy number to the services Earnings payment reports – several payers, several income earners and Earnings payment reports – one payer, one income earner.
1.01	09/12/2019	Added a clarification on the parameter type to be used (PensionActCode) in the service 305 Earnings payment reports – missing pension policy number. Added to Section 6 a description of the order of query criteria used in the request messages of the real-time Web Service services.
1.02	21/04/2020	Removed the linking of data related to customer's different identifiers in the Incomes Register's data distribution (Section 3.1.2). Corrected the data type of the income type parameter in the table concerning service 319 Benefits payment reports – several payers. Previous: .../SubscriptionParameters/TimespanParameter Corrected: .../SubscriptionParameters/ValueParameter
	03/01/2023	Specified the permitted subscribers in Section 6.12 'Summary of payer's earnings payment data'. Removed a reference to schema changes from Section 2.2 as outdated data.



## CONTENTS

<b>1</b>	<b>Foreword.....</b>	<b>4</b>
<b>2</b>	<b>Distribution of data from the Incomes Register .....</b>	<b>4</b>
2.1	Data distribution channels.....	4
2.2	Schema structures .....	4
2.3	General structure of a record containing incomes payment reports .....	5
2.4	Distribution of data via the SFTP interface.....	7
2.5	Distribution of data via the real-time Web Service interface.....	8
<b>3</b>	<b>General information on data distribution.....</b>	<b>9</b>
3.1	Customer's identifying data .....	9
3.2	Substitute payer.....	9
3.3	Data access rights .....	10
3.4	Data identifying information.....	11
3.5	Derived data .....	12
3.6	Codes .....	12
<b>4</b>	<b>Record subscription.....</b>	<b>13</b>
<b>5</b>	<b>Records distributed on the basis of a record subscription .....</b>	<b>14</b>
5.1	Earnings payment reports – all income earners.....	14
5.2	Earnings payment reports – several income earners.....	16
5.3	Earnings payment reports – several payers.....	18
5.4	Earnings payment reports – several payers, several income earners .....	20
5.5	Earnings payment reports – several earnings-related pension providers.....	22
5.6	Earnings payment reports – missing pension policy number.....	23
5.7	Earnings payment reports – several report references.....	24
5.8	Employer's separate reports – all payers.....	25
5.9	Employer's separate reports – several payers .....	26
5.10	Employer's separate reports – several earnings-related pension providers .....	28
5.11	Messages sent to the party.....	30
5.12	Access log data for the party's users.....	31
5.13	Summary of payer's earnings payment data.....	32
5.14	Benefits payment reports – all income earners .....	34
5.15	Benefits payment reports – several income earners .....	35
5.16	Benefits payment reports – several payers, several income earners.....	37
5.17	Benefits payment reports – several report references .....	39
5.18	Benefits payment reports – several payers.....	40
<b>6</b>	<b>Records distributed via the real-time Web Service interface .....</b>	<b>42</b>
6.1	Earnings payment reports – one income earner.....	42
6.2	Earnings payment reports – one payer.....	44
6.3	Earnings payment reports – one payer, one income earner .....	46
6.4	Earnings payment reports – one pension policy number .....	48
6.5	Employer's separate reports – one payer .....	49
6.6	Employer's separate reports – one earnings-related pension policy number.....	51
6.7	Messages sent to the party.....	52
6.8	Benefits payment reports – one income earner .....	53
6.9	Benefits payment reports – one payer, one income earner .....	55
6.10	Benefits payment reports – one report reference.....	57



## 1 FOREWORD

This document describes the distribution of data from the Incomes Register via the technical interface. The document provides a general description of the services distributing data via the technical interface. The schema formats of the data distributed from the Incomes Register are described in separate documents.

## 2 DISTRIBUTION OF DATA FROM THE INCOMES REGISTER

### 2.1 Data distribution channels

Data is distributed from the Incomes Register via the following channels:

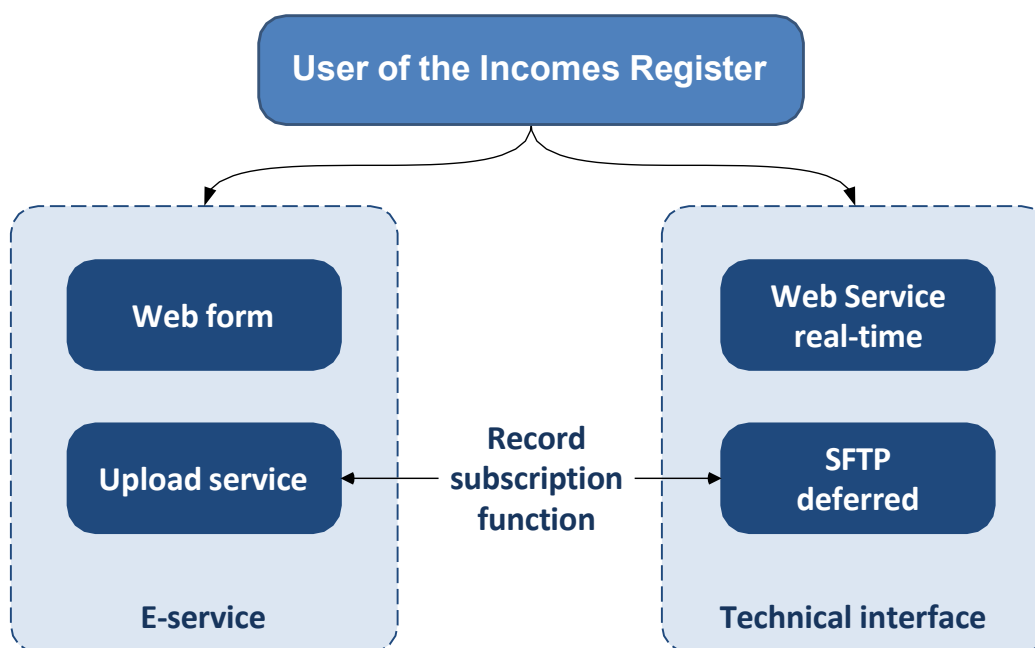


Figure 1. Data distribution channels.

In the e-service, users of the Incomes Register's services can retrieve data from the Incomes Register in accordance with their user roles and data access rights. Data can be queried in real time using the web forms of the e-service. Records ordered in advance via the record subscription function can also be retrieved from the e-service.

Via the technical interface, data is distributed through the SFTP interface as well as real-time Web Services. Records subscribed to in advance using the record subscription function can be retrieved via the SFTP interface. Limited data sets, for example, the earnings payment reports or benefits payment reports for a single income earner from a specific time range, can be retrieved using real-time Web Service requests. The Web Service interface is also referred to as the WS interface in this description.

Letters and printed transcripts can also be delivered in paper form by the Incomes Register.

### 2.2 Schema structures

The Incomes Register's technical interface distributes records in XML format. Records containing different types of data have their own schema structures.

The schemas for data distribution are presented in Table 1.

Data distributed from the Incomes Register	Schema
Earnings payment reports	WageReportsFromIR
Employer's separate reports	PayerSummaryReportsFromIR
Summary of payer's earnings payment data	WageReportSummaryFromIR
Benefits payment reports	BenefitReportsFromIR
Messages	MessagesFromIR
Log data	LogDataFromIR

Table 1. Data distribution schemas.

### 2.3 General structure of a record containing incomes payment reports

The structural differences between records containing **earnings payment reports** submitted to the *Incomes Register* and records containing earnings payment reports distributed from the *Incomes Register* are presented in Figure 2. In a record submitted by a payer to the Incomes Register, the record details and payment details (pay period details, payer details) are provided only once and apply to all reports in the record. Records distributed from the Incomes Register containing earnings payment reports typically comprise reports submitted to the Incomes Register in many different records, so the payment details are report-specific in records distributed to data users. Similarly, the general record details forwarded to data users are report-specific.

The record distributed to a data user also contains record-specific general query details, such as data on the time and parameters of the query, as well as query summary data.

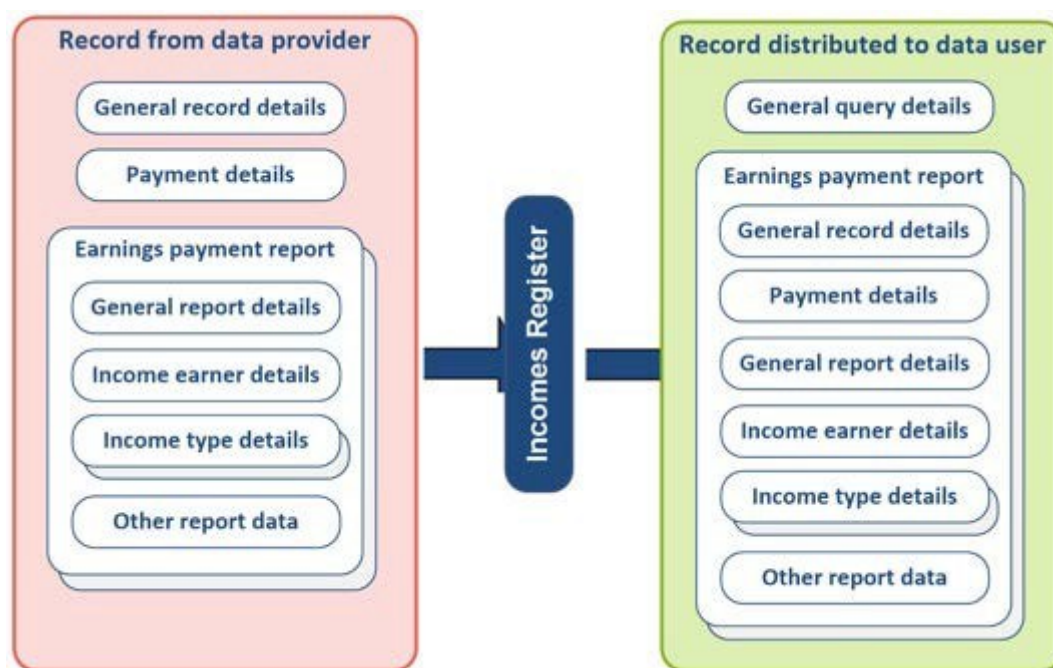


Figure 2. General structure of a record containing earnings payment reports

The structure of the record containing **employer's separate reports** or **benefits payment reports** submitted to the *Incomes Register* as well as the structure of the record containing employer's separate reports or benefits payment reports distributed from the *Incomes Register* match the structure of the record containing earnings payment reports. In the record submitted to the Incomes Register, the record details and payment details (e.g. payer details) are only provided once and will apply to all reports in the record. Records containing reports distributed from the Incomes Register typically comprise reports submitted to the Incomes Register in many different records, so the general record details and payment details are report-specific in records distributed to data users.

## 2.4 Distribution of data via the SFTP interface

The principle of data distribution via the SFTP interface is presented in Figure 3.

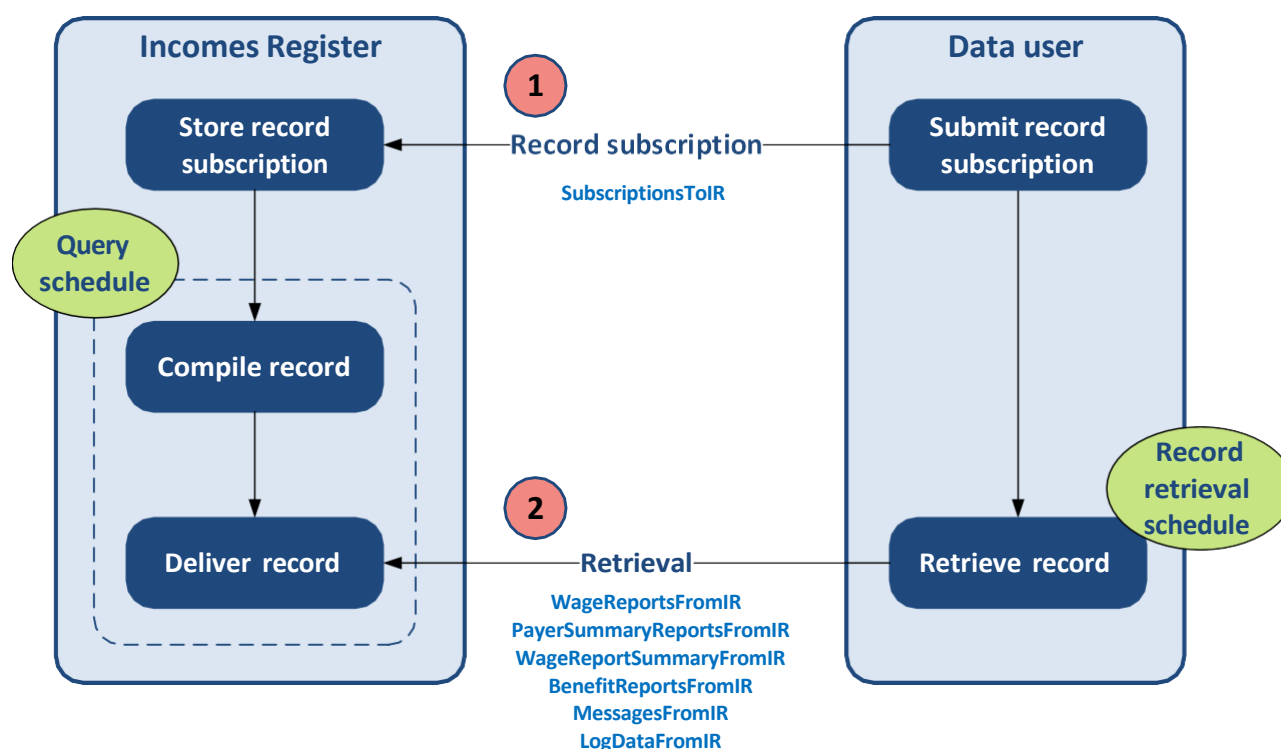


Figure 3. Distribution of data via the SFTP interface

The data user submits a record subscription to the Incomes Register. The record subscription can be submitted via the technical service interface or saved in the e-service.

The Incomes Register launches a data query in accordance with the query schedule specified in the record subscription. The Incomes Register compiles the record and saves it in the Incomes Register for retrieval by the data user.

The data user retrieves the record in accordance with the record retrieval schedule. The retrieval schedule must be harmonised with the selection schedule and must take into account the period of time required for the compilation of the record in the Incomes Register. The data user should be prepared for the possibility that if the record has not been prepared by the time of retrieval, retrieval will have to be re-attempted after some time has passed.

If the record subscription is a recurrent subscription, the compilation, distribution and retrieval of the record are repeated regularly in accordance with the query and retrieval schedule.

## 2.5 Distribution of data via the real-time Web Service interface

The principle of data distribution via the real-time Web Service interface is presented in Figure 4.

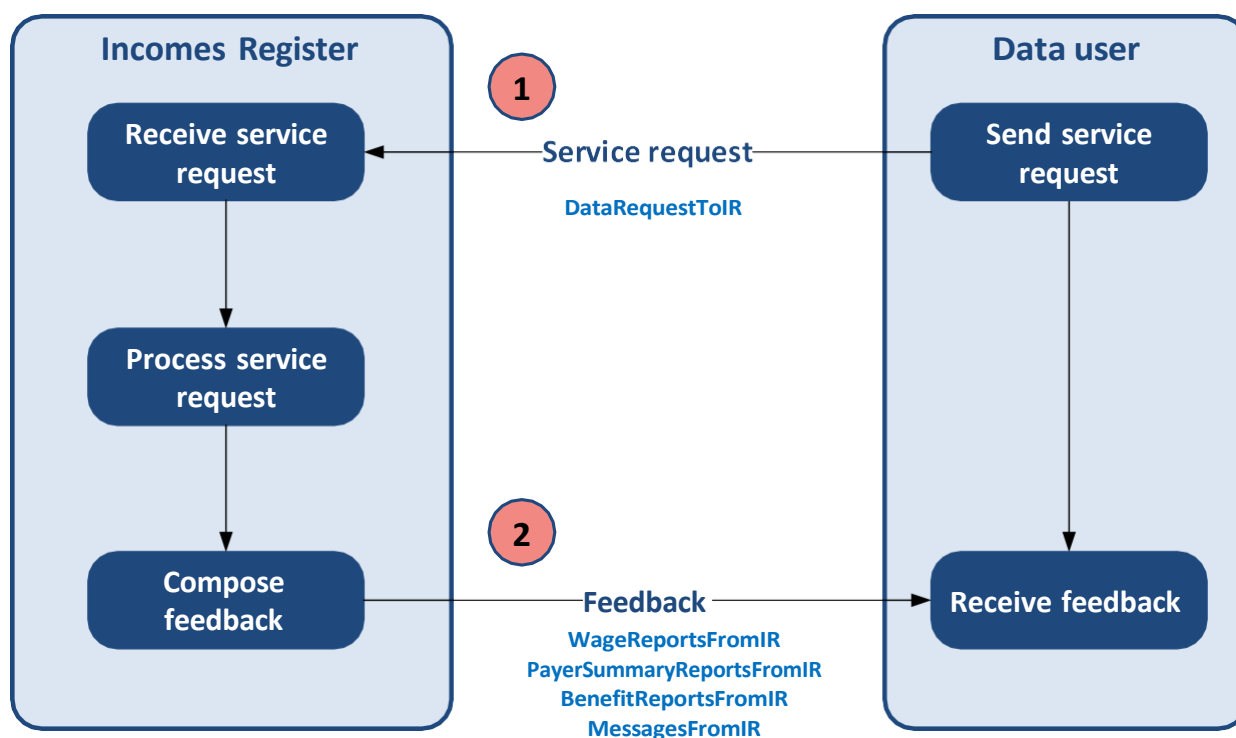


Figure 4. Distribution of data via the real-time Web Service interface.

The data user sends a real-time synchronous WS service request to the technical interface of the Incomes Register. The real-time WS interface is intended for use in situations where the need for information is direct and specific. Real-time services can be used, for example, when integrating the data user's own user interface application with Incomes Register services in order to retrieve up-to-date information to the data user's own user interface.

The Incomes Register receives a service request, selects the data requested, and compiles a response for the subscriber. The data user receives synchronous feedback as a reply to the service request.



### 3 GENERAL INFORMATION ON DATA DISTRIBUTION

#### 3.1 Customer's identifying data

##### 3.1.1 Identifier country code as a query criterion

If the customer specified as the record query criterion has been identified by a Finnish identifier (Business ID or a Finnish Personal Identification Number) in the record subscription or the WS service request, the country code potentially specified as a query criterion with regard to the identifier will not be taken into account as a query criterion when querying the record. If the customer specified as a query criterion has been identified in the record subscription or the WS service request by some other identifier, the identifier's country code will be taken into account as a query criterion in the query.

**Example 1:**

The income earner's identifier has been specified in the record subscription as the earnings payment report's query criterion:

- Customer identifier type: Finnish Personal Identification Number
- Customer identifier: 010180-XXX
- Identifier country code: FI

or alternatively the income earner's identifier:

- Customer identifier type: Finnish Personal Identification Number
- Customer identifier: 010180-XXX

Based on the record subscription, the earnings payment reports in which the income earner has been identified by the Finnish Personal Identification Number 010180-XXX are queried. In both cases, the reports queried for the record will include both the earnings payment reports for which a country code is provided in connection with the income earner's Finnish Personal Identification Number as well as the earnings payment reports for which a country code is not provided.

**Example 2:**

The income earner's identifier has been specified in the record subscription as the earnings payment report's query criterion:

- Customer identifier type: Foreign Personal Identification Number
- Customer identifier: 60077802430970
- Identifier country code: ES

Based on the record subscription, the earnings payment reports in which the income earner has been identified by the foreign Personal Identification Number 60077802430970 are queried. Only the earnings payment reports in which the country code ES has been provided in connection with the income earner's foreign Personal Identification Number are queried for the record.

##### 3.1.2 Business ID and a Finnish Personal Identification Number for the same customer

If both the Finnish Personal Identification Number and Business ID of the same customer are saved in the Incomes Register, the register will not link data reported under these different identifiers. The Incomes Register will provide the data users only the income data in accordance with the identifier (payer/income earner) specified as the query criterion.

The data user must make separate queries if they need income data reported for the income earner under both the Finnish Personal Identification Number and the Business ID linked to it. Correspondingly, the data user must make separate queries if they need income data with the Business ID as the payer or the Personal Identification Number linked to the Business ID as the payer. This data can be requested on the same record subscription.

#### 3.2 Substitute payer

If a payer is specified as the query criterion for a record containing earnings payment reports in a record subscription or a WS service request and nothing else is determined in connection with the record content, the record will include the earnings payment reports, where:

- the payer specified as the query criterion has been reported as the payer (the Payer data group), or
- the payer specified as the query criterion has been reported as the employer (the SubstitutePayer data group).



### 3.3 Data access rights

The Incomes Register distributes data in accordance with the data users' data access rights.

The data access profiles of the data users and the data released via the technical interface in compliance with such profiles are defined in the data access rights of the Incomes Register. The data access profiles are named and the data distributed based on them is defined party-specifically. There is no limitation to the party-specific number of data access profiles. As many data access profiles with different contents as are needed to meet the needs of the data user organisation's business processes and the related data access rights can be created for each data user organisation. Records can then be subscribed to in accordance with these profiles via the technical interface.

Separate data access profiles are defined for different data sets. Separate party-specific data access profiles are specified for the data contents of the earnings payment report, the employer's separate report and the benefits payment report.

In a record subscription, the subscriber must specify the identifier of the data access profile according to which the record should be compiled. Correspondingly, a Web Service interface service request must include the data access profile according to which the service should return the data.

The principle of data access profiles is illustrated in Figure 5. The figure displays the profiles pertaining to the report's data content (profiles with simplified data content) for the data user organisations A and B (the principle of the data access profiles is similar for earnings payment reports, employer's separate reports and benefits payment reports). The profile lists the data released to each user organisation in accordance with the profile. In the figure, data user organisation A has three data access profiles, the data contents of which can be freely defined within the organisation's data access rights. In principle, two different organisations can have profiles with the same name, but organisation-specific data contents (profile Z in the figure).

The data access rights of a user organisation can also be affected by the *data contents*. For example, the *value* of the reason code for absences reported on an earnings payment report will determine whether the reason code is distributed to a user organisation, if the reason code is included in the profile applied to the query.

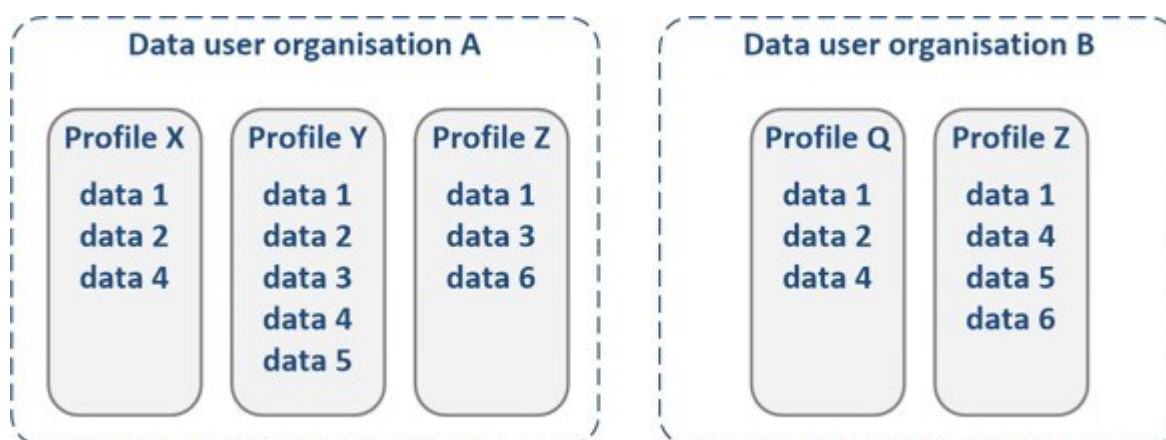


Figure 5. Data release in accordance with data access profiles.

The data released to a party is also affected by party-specific restrictions related to, for example, the income earner's age.

### 3.4 Data identifying information

#### 3.4.1 Earnings payment report, employer's separate report, benefits payment report

Below, a report will refer to an earnings payment report, employer's separate report or benefits payment report. The principle of identifying information and replacing or cancelling the report is the same for all report types.

The payer uniquely identifies the report using a payer's report reference (ReportId). The payer's report reference uniquely and report type-specifically identifies all reports submitted by a specific payer. The payer may use the same payer's report reference, for example, in an earnings payment report and a benefits payment report because they have different report types.

The Incomes Register assigns a unique *Incomes Register report reference* (IRReportId) to the report. The Incomes Register report reference uniquely identifies all reports in the Incomes Register. It is recommended that data users use the Incomes Register report references as the identifying information of reports in their own systems.

The Incomes Register assigns *version number 1* (ReportVersion) to a new report. The *status* of the new report is "Valid".

Together, the Incomes Register report reference and version number uniquely identify the report version.

When a payer maintains the report data and submits a *replacement* report to the Incomes Register, the Incomes Register creates a new version of the report and assigns it a version number one greater than the version number of the replaced report. The Incomes Register report reference and the payer's report reference remain unchanged from the previous version of the report. The status of the new report version is "Valid".

When a payer submits a *cancellation* report to the Incomes Register, the Incomes Register creates a new version (with identical data content to the previous report version) and assigns it a version number one greater than the version number of the cancelled report. The Incomes Register report reference and the payer's report reference remain unchanged from the previous version of the report. The status of the new version of the report is "Cancelled".

The earlier versions of the report are not maintained in connection with a replacement or a cancellation. This being the procedure, data users can subscribe to new and revised reports from the Incomes Register – such as a recurrent subscription queried daily – and the Incomes Register is able to query the report versions submitted to the Incomes Register within the desired time period based on the timestamps for change.

The status and identifying information of a report in connection with the replacement and cancellation of the report are illustrated in Figure 6.

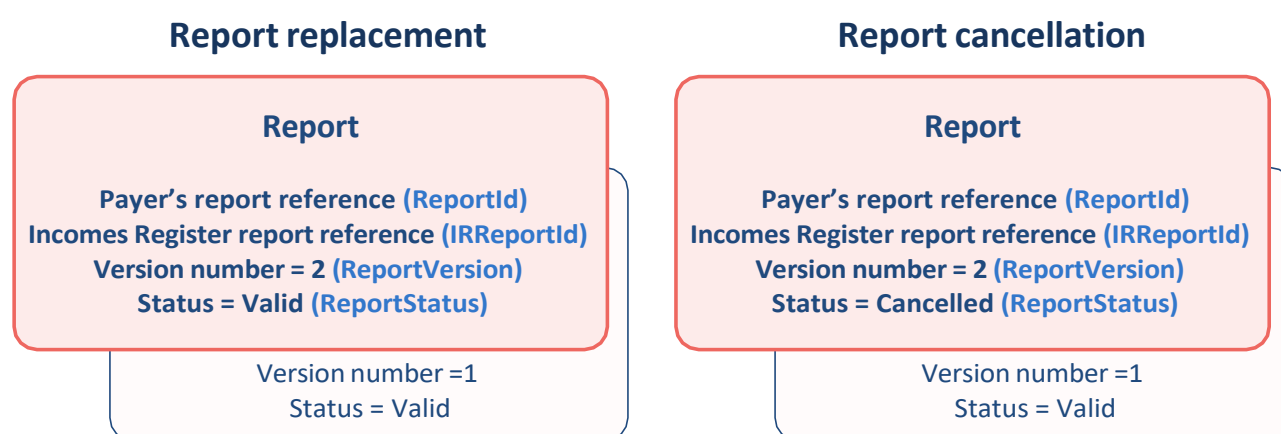


Figure 6. The identifying information and version numbering of a report.

When downloading a report to its own system via the technical interface, the data user must check whether there is already a report with the same Incomes Register report reference in its system:

1. If no previously downloaded report with the same Incomes Register report reference is found, the data user saves the report. The version number of the downloaded report may be greater than 1, if the report has not been distributed to the data user before, and several versions of the report have been created in the Incomes Register. The version number can also be greater than 1 if the data user did not have data access rights to the previous versions of the report.
2. If a previously downloaded report with the same Incomes Register report reference is found, the data user must check that the report version now being downloaded *has a greater version number* than the report version already found in the user's system.
  - If the version number is greater, the data user saves the new report version in their system (the new version replaces the old version).
  - If the version number is equal to (or less than) the version number of the existing report, the version being downloaded is the same as the existing version (or an expired version). The data user does not save the version in its own system.

The status of the report version distributed by the Incomes Register can be "Valid" or "Cancelled".

### 3.4.2 Messages

The Incomes Register assigns unique *Income Register message references* (IRMessageId) to messages. The Incomes Register message reference uniquely identifies all messages saved in the Incomes Register.

When downloading messages via the technical interface, message recipients must check whether there is already a message in their system with the same Incomes Register message reference. If such a message is found, the message recipient does not need to save the message. Because the information in a message cannot be maintained in the Incomes Register, the information in a previously downloaded message will never change.

### 3.4.3 E-service access log data

The Incomes Register uniquely identifies the access log events with *Incomes Register log event references* (IRLogEventId).

When downloading log events via the technical interface to their own system, the recipient should check whether there is already a log event in their system with the same Incomes Register access log event reference. If such a log event is found, the recipient does not need to save the log events, because the access log data never changes.

## 3.5 Derived data

The principle behind the distribution of data via the technical interface is that the Incomes Register distributes the data as it was submitted to the Incomes Register (taking account of the data access rights of the data users).

According to this principle, the contents of the incomes payment reports distributed by the Incomes Register to data users are identical to those of reports submitted by the payers; the Incomes Register does not distribute any other data derived from the report data. The Incomes Register does not add up the report data in the records distributed via the technical interface; instead, data users themselves must generate the totals and other derived data required in their processes from the "raw data" provided by the Incomes Register. However, there can be sum level data in what are referred to as reconciliation records, distributed via the technical interface.

## 3.6 Codes

The codes linked to the data content of the technical interface messages are described in separate documents.

## 4 RECORD SUBSCRIPTION

A record subscription consists of a primary subscription and secondary subscriptions connected to it. The number of secondary subscriptions in a primary subscription is unlimited. A secondary subscription specifies the information on the subscribed record and the record query criteria. All secondary subscriptions connected to the primary subscription have the same validity period and are queried at the same time. During each query run, a separate record is generated for each secondary subscription.

The structure of a record subscription is illustrated in Figure 7.

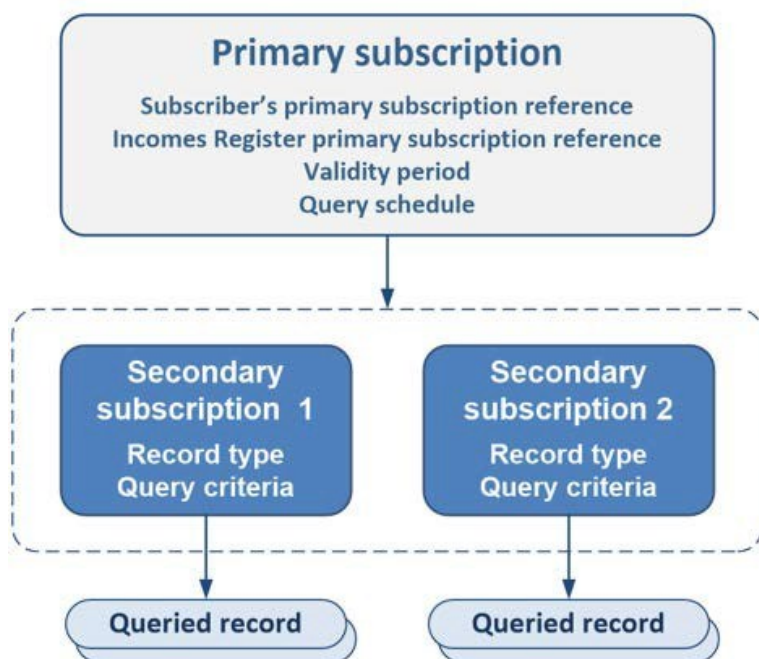


Figure 7. Structure of a record subscription.

Submitting a record subscription to the Incomes Register is described in the document, "Technical interface – Submitting data to the Incomes Register". Record subscriptions are submitted to the Incomes Register using the **SubscriptionsToIR** schema. The contents of the schema are described in the document, "Data delivery – Schemas – Record subscriptions".

The Incomes Register uniquely identifies the queried record *with an Incomes Register query reference* (IRQueryId). Every record queried from the Incomes Register has its own Incomes Register query reference that is included in the name of the record file created by the query.

## 5 RECORDS DISTRIBUTED ON THE BASIS OF A RECORD SUBSCRIPTION

This section describes the records generated based on a record subscription and distributed via the technical interface.

The general record query criteria and their application are described in connection with the introduction of the records. In addition to the general query criteria, the query process is controlled by party-specific conditions and additional limitations (for example, data access rights related to age limits) which are described in a separate document.

The "V/M" column in the data tables indicates whether a data item or query criterion is voluntary (V) or mandatory (M) in a record subscription for the record in question. In this description, only those data elements of the record subscription schema that are essential to understanding the query criteria are presented.

### 5.1 Earnings payment reports – all income earners

All earnings payment reports from income earners are queried into the record. The record is compiled from new and changed reports submitted to the Incomes Register within a specific time range. The query can also be filtered with the "Payment date or other report date" field.

The record is compiled in accordance with the **WageReportsFromIR** schema. The contents of the schema are described in the document, "Data distribution – Schemas – Earnings payment reports".

Record type specific data submitted in a record subscription comprise the following.

Primary subscription (MainSubscription) data:

Data	V/M	Values	Description
Distribution channel (DeliveryChannelCode)	M	1	SFTP
Record subscription type (SubscriptionType)	M	1, 2	One-off subscription, Recurrent subscription
Start of the query time range for changes (ModifiedTimespanStart)	M		The query selects the report versions (new, replacement, cancellation) that have been submitted to the Incomes Register during the specified query time range for changes (Start of the query time range for changes – End of the query time range for changes).
End of the query time range for changes (ModifiedTimespanEnd)	V		Can only be specified in a one-off subscription. If the end of the query time range for changes has not been specified for a one-off subscription, the query time (date and time of query) is used as the end of the query time range. In a recurrent subscription, the end of the query time range for changes is the query time.

Secondary subscription (Subscription) data:

Data	V/M	Values	Description
Record type (QueryDataType)	M	300	Earnings payment reports – all income earners
Data access profile (QueryProfile)	M		The data user's data access profile, according to which the record is compiled.
Query all report versions (IncludeAllVersions)	M		This query criterion indicates whether to include only the latest version of each report submitted to the Incomes Register during the specified query time range for changes or all report versions submitted during the specified query time range for changes.
Record schema version (QueryDataSchemaVersion)	M		The schema version according to which the record is generated.

Query criteria (SubscriptionParameters):

Data	V/M	Values	Description
.../TimespanParameter	V		Query criterion: Time range of payment date. Several time ranges of payment date (a maximum of 20) can be specified.

			The record will include reports, the "Payment date or other report date" of which is in any of the specified periods.
.../ParameterType		4	Time range of payment date

## 5.2 Earnings payment reports – several income earners

The record will include the earnings payment reports for the income earners listed in the subscription. The record is compiled from new and changed reports submitted to the Incomes Register within a specific time range. The query can also be filtered income earner specifically with the "Payment date or other report date" field, the earnings period and the absence time range.

The record is compiled in accordance with the **WageReportsFromIR** schema. The contents of the schema are described in the document, "Data distribution – Schemas – Earnings payment reports".

Record type specific data submitted in a record subscription comprise the following.

Primary subscription (MainSubscription) data:

Data	V/M	Values	Description
Distribution channel (DeliveryChannelCode)	M	1	SFTP
Record subscription type (SubscriptionType)	M	1, 2	One-off subscription, Recurrent subscription
Start of the query time range for changes (ModifiedTimespanStart)	M		The query selects the report versions (new, replacement, cancellation) that have been submitted to the Incomes Register during the specified query time range for changes (Start of the query time range for changes – End of the query time range for changes).
End of the query time range for changes (ModifiedTimespanEnd)	V		Can only be specified in a one-off subscription. If the end of the query time range for changes has not been specified for a one-off subscription, the query time (date and time of query) is used as the end of the query time range. In a recurrent subscription, the end of the query time range for changes is the query time.

Secondary subscription (Subscription) data:

Data	V/M	Values	Description
Record type (QueryDataType)	M	301	Earnings payment reports – several income earners
Data access profile (QueryProfile)	M		The data user's data access profile, according to which the record is compiled.
Query all report versions (IncludeAllVersions)	M		This query criterion indicates whether to include only the latest version of each report submitted to the Incomes Register during the specified query time range for changes or all report versions submitted during the specified query time range for changes.
Record schema version (QueryDataSchemaVersion)	M		The schema version according to which the record is generated.

A list of the customers to include (IdCodeList):

Data	V/M	Values	Description
.../CodeListType	M	1	List of income earners
.../CodeItems/CodeItem			The income earners that are the query target. One CodeItem element is specified in the subscription for each income earner to be included in the record.
.../IdType			Income earner's identifying data
.../IdCode			Income earner's identifying data
.../IdCountryCode			Income earner's identifying data
.../SubscriptionParameters/TimespanParameter	V		Query criterion: Time range of payment date. The payment date periods are specified income earner specifically, and a maximum of 20 can be specified for one income earner.  The record will include the income earner's reports, the "Payment date or other report date" of which is in any of the periods specified as query criteria.
.../ParameterType		4	Time range of payment date
.../SubscriptionParameters/TimespanParameter	V		Query criterion: Time range of earnings period.

			<p>The time ranges of earnings period are specified income earner specifically, and a maximum of 20 can be specified for one income earner.</p> <p>The record will include the income earner's reports for which an earnings period has been specified that is either fully or partly within one of the time ranges of earnings period specified as query criteria.</p>
.../ParameterType		5	Time range of earnings period
.../SubscriptionParameters/TimespanParameter	V		<p>Query criterion: Absence time range.</p> <p>The absence time ranges are specified income earner specifically, and a maximum of 20 can be specified for one income earner.</p> <p>The record will include the income earner's reports for which one of the following time ranges is either fully or partly within one of the absence time ranges specified as query criteria:</p> <ul style="list-style-type: none"> <li>• Start date of the time period for reporting absences - End date of the time period for reporting absences</li> <li>• Unpaid absence: Start date of the period of absence - End date of the period of absence</li> <li>• Paid absence: Start date of the period of absence - End date of the period of absence</li> </ul>
.../ParameterType		18	Absence time range

#### Application of query criteria:

The record will include the earnings payment reports of the income earner targeted by the query that have been submitted to the Incomes Register within the specified query time range for changes. If *both* time ranges of payment date *and* time ranges of earnings period have been specified for the income earner as filtering criteria, the record will include the earnings payment reports, the "Payment date or other report date" of which is within one of the time ranges of payment date specified as query criteria *and* the specified earnings period of which is either fully or partly within one of the time ranges of earnings periods specified as query criteria.

The Absence time range query criterion is correspondingly combined with the other query criteria, i.e., it is combined with the other specified query criteria as an additional filter.



### 5.3 Earnings payment reports – several payers

The record will include the earnings payment reports submitted by the payers listed in the subscription. The record is compiled from new and changed reports submitted to the Incomes Register within a specific time range. The query can also be filtered payer-specifically with the "Payment date or other report date" field and the occupational accident insurance policy number.

The record is compiled in accordance with the **WageReportsFromIR** schema. The contents of the schema are described in the document, "Data distribution – Schemas – Earnings payment reports".

Record type specific data submitted in a record subscription comprise the following.

Primary subscription (MainSubscription) data:

Data	V/M	Values	Description
Distribution channel (DeliveryChannelCode)	M	1	SFTP
Record subscription type (SubscriptionType)	M	1, 2	One-off subscription, Recurrent subscription
Start of the query time range for changes (ModifiedTimespanStart)	M		The query selects the report versions (new, replacement, cancellation) that have been submitted to the Incomes Register during the specified query time range for changes (Start of the query time range for changes – End of the query time range for changes).
End of the query time range for changes (ModifiedTimespanEnd)	V		Can only be specified in a one-off subscription. If the end of the query time range for changes has not been specified for a one-off subscription, the query time (date and time of query) is used as the end of the query time range. In a recurrent subscription, the end of the query time range for changes is the query time.

Secondary subscription (Subscription) data:

Data	V/M	Values	Description
Record type (QueryDataType)	M	302	Earnings payment reports – several payers
Data access profile (QueryProfile)	M		The data user's data access profile, according to which the record is compiled.
Query all report versions (IncludeAllVersions)	M		This query criterion indicates whether to include only the latest version of each report submitted to the Incomes Register during the specified query time range for changes or all report versions submitted during the specified query time range for changes.
Record schema version (QueryDataSchemaVersion)	M		The schema version according to which the record is generated.

A list of the customers to include (IdCodeList):

Data	V/M	Values	Description
.../CodeListType	M	2	List of payers
.../CodeItems/CodeItem			The payers that are the query target. One CodeItem element is specified in the subscription for each payer to be included in the record.
.../IdType			Payer's identifying data
.../IdCode			Payer's identifying data
.../IdCountryCode			Payer's identifying data
.../SubscriptionParameters/TimespanParameter	V		Query criterion: Time range of payment date. The time ranges of payment date are specified payer-specifically, and a maximum of 20 can be specified for one payer.  The record will include reports, the "Payment date or other report date" of which is within any of the time ranges specified as query criteria.
.../ParameterType		4	Time range of payment date

.../SubscriptionParameters/ValueParameter	V		<p>Query criterion: The policy number of the occupational accident insurance.</p> <p>The occupational accident insurance policy numbers are specified payer-specifically, and a maximum of 20 can be specified for one payer.</p> <p>The record will include the reports which include any of the occupational accident insurance policy numbers specified as query criteria.</p>
.../ParameterType		8	Occupational accident insurance policy number

Application of query criteria: The record will include the payers' earnings payment reports targeted by the query that have been submitted to the Incomes Register within the specified query time range for changes. If *both* payment date periods *and* occupational accident insurance policy numbers have been specified for the payer, the record will include the earnings payment reports, the "Payment date or other report date" of which is within one of the time ranges of payment date specified as query criteria *and* the occupational accident insurance policy number of which is one of the numbers specified as query criteria.



## 5.4 Earnings payment reports – several payers, several income earners

The record will include the earnings payment reports submitted by the payers listed in the subscription, where the income earners are those listed in the subscription. The income earners are specified in the subscription payer-specifically. The subscription can be for a record that contains, for example, the wages paid by payer P1 to income earners I1 and I2 and the wages paid by payer P2 to income earners I3 and I4. The record is compiled from new and changed reports submitted to the Incomes Register within a specific time range. The query can also be filtered payer- and income-earner-specifically with the "Payment date or other report date" field, the Absence time range and the Occupational accident insurance policy number.

The record is compiled in accordance with the **WageReportsFromIR** schema. The contents of the schema are described in the document, "Data distribution – Schemas – Earnings payment reports".

Record type specific data submitted in a record subscription comprise the following.

Primary subscription (MainSubscription) data:

Data	V/M	Values	Description
Distribution channel (DeliveryChannelCode)	M	1	SFTP
Record subscription type (SubscriptionType)	M	1, 2	One-off subscription, Recurrent subscription
Start of the query time range for changes (ModifiedTimespanStart)	M		The query selects the report versions (new, replacement, cancellation) that have been submitted to the Incomes Register during the specified query time range for changes (Start of the query time range for changes – End of the query time range for changes).
End of the query time range for changes (ModifiedTimespanEnd)	V		Can only be specified in a one-off subscription. If the end of the query time range for changes has not been specified for a one-off subscription, the query time (date and time of query) is used as the end of the query time range. In a recurrent subscription, the end of the query time range for changes is the query time.

Secondary subscription (Subscription) data:

Data	V/M	Values	Description
Record type (QueryDataType)	M	303	Earnings payment reports – several payers, several income earners
Data access profile (QueryProfile)	M		The data user's data access profile, according to which the record is compiled.
Query all report versions (IncludeAllVersions)	M		This query criterion indicates whether to include only the latest version of each report submitted to the Incomes Register during the specified query time range for changes or all report versions submitted during the specified query time range for changes.
Record schema version (QueryDataSchemaVersion)	M		The schema version according to which the record is generated.

A list of the customers to include (IdCodeList):

Data	V/M	Values	Description
.../CodeListType	M	2	List of payers
.../CodeItems/CodeItem			The payer-income earner pairs that are the query target. One CodeItem element is specified in the subscription for each queried <i>payer-income earner pair</i> .
.../IdType			Payer's identifying data
.../IdCode			Payer's identifying data
.../IdCountryCode			Payer's identifying data
.../SubscriptionParameters/IdCodeParameter	M		Query criterion: Income earner. The record will include the reports submitted by the payer for the income earner.
.../ParameterType		7	Income earner
.../IdType			Income earner's identifying data

.../IdCode			Income earner's identifying data
.../IdCountryCode			Income earner's identifying data
.../SubscriptionParameters/TimespanParameter	V		<p>Query criterion: Time range of payment date. The payment date periods are specified payer-income-earner-specifically, and a maximum of 20 can be specified for one payer-income earner pair.</p> <p>The record will include the reports, submitted by the payer for the income earner, the "Payment date or other report date" of which is in any of the periods specified as query criteria.</p>
.../ParameterType		4	Time range of payment date
.../SubscriptionParameters/TimespanParameter	V		<p>Query criterion: Absence time range. The Absence time ranges are specified payer-income-earner-specifically, and a maximum of 20 can be specified for one payer-income earner pair.</p> <p>The record will include the reports submitted by the payer for the income earner, for which one of the following time ranges is either fully or partly within one of the absence time ranges specified as query criteria:</p> <ul style="list-style-type: none"> <li>• Start date of the time period for reporting absences - End date of the time period for reporting absences</li> <li>• Unpaid absence: Start date of the period of absence - End date of the period of absence</li> <li>• Paid absence: Start date of the period of absence - End date of the period of absence</li> </ul>
.../ParameterType		18	Absence time range
.../SubscriptionParameters/ValueParameter	V		<p>Query criterion: Occupational accident insurance policy number. The occupational accident insurance policy numbers are specified payer-specifically, and a maximum of 20 can be specified for one payer.</p> <p>The record will include the reports which include any of the occupational accident insurance policy numbers specified as query criteria.</p>
.../ParameterType		8	Occupational accident insurance policy number



## 5.5 Earnings payment reports – several earnings-related pension providers

The record will include the earnings payment reports in which the earnings-related pension provider code is one of the codes specified in the subscription. The record is compiled from new and changed reports submitted to the Incomes Register within a specific time range. The query can be further filtered with the "Payment date or other report date" field, in which case the filter applies to all earnings-related pension providers specified in the subscription.

The record is compiled in accordance with the **WageReportsFromIR** schema. The contents of the schema are described in the document, "Data distribution – Schemas – Earnings payment reports".

Record type specific data submitted in a record subscription comprise the following.

Primary subscription (MainSubscription) data:

Data	V/M	Values	Description
Distribution channel (DeliveryChannelCode)	M	1	SFTP
Record subscription type (SubscriptionType)	M	1, 2	One-off subscription, Recurrent subscription
Start of the query time range for changes (ModifiedTimespanStart)	M		The query selects the report versions (new, replacement, cancellation) that have been submitted to the Incomes Register during the specified query time range for changes (Start of the query time range for changes – End of the query time range for changes).
End of the query time range for changes (ModifiedTimespanEnd)	V		Can only be specified in a one-off subscription. If the end of the query time range for changes has not been specified for a one-off subscription, the query time (date and time of query) is used as the end of the query time range. In a recurrent subscription, the end of the query time range for changes is the query time.

Secondary subscription (Subscription) data:

Data	V/M	Values	Description
Record type (QueryDataType)	M	304	Earnings payment reports – several earnings-related pension providers
Data access profile (QueryProfile)	M		The data user's data access profile, according to which the record is compiled.
Query all report versions (IncludeAllVersions)	M		This query criterion indicates whether to include only the latest version of each report submitted to the Incomes Register during the specified query time range for changes or all report versions submitted during the specified query time range for changes.
Record schema version (QueryDataSchemaVersion)	M		The schema version according to which the record is generated.

Query criteria (SubscriptionParameters):

Data	V/M	Values	Description
.../ValueParameter	M		Query criterion: Earnings-related pension provider code. Several earnings-related pension provider codes (a maximum of 20) can be specified.  The record will include only the reports in which the "Pension provider code" value is one of the query criteria specified.
.../ParameterType		10	Pension provider code
.../TimespanParameter	V		Query criterion: Time range of payment date. Several time ranges of payment date (a maximum of 20) can be specified.  The record will include reports, the "Payment date or other report date" of which is within any of the time ranges specified as query criteria.
.../ParameterType		4	Time range of payment date

## 5.6 Earnings payment reports – missing pension policy number

The record will include the earnings payment reports with *no income earner's pension policy number*. The record is compiled from new and changed reports submitted to the Incomes Register within a specific time range. The query can also be filtered with the "Payment date or other report date" field and the "Pension Insurance Act" field.

The record is compiled in accordance with the **WageReportsFromIR** schema. The contents of the schema are described in the document, "Data distribution – Schemas – Earnings payment reports".

Record type specific data submitted in a record subscription comprise the following.

Primary subscription (MainSubscription) data:

Data	V/M	Values	Description
Distribution channel (DeliveryChannelCode)	M	1	SFTP
Record subscription type (SubscriptionType)	M	1, 2	One-off subscription, Recurrent subscription
Start of the query time range for changes (ModifiedTimespanStart)	M		The query selects the report versions (new, replacement, cancellation) that have been submitted to the Incomes Register during the specified query time range for changes (Start of the query time range for changes – End of the query time range for changes).
End of the query time range for changes (ModifiedTimespanEnd)	V		Can only be specified in a one-off subscription. If the end of the query time range for changes has not been specified for a one-off subscription, the query time (date and time of query) is used as the end of the query time range. In a recurrent subscription, the end of the query time range for changes is the query time.

Secondary subscription (Subscription) data:

Data	V/M	Values	Description
Record type (QueryDataType)	M	305	Earnings payment reports – missing pension policy number
Data access profile (QueryProfile)	M		The data user's data access profile, according to which the record is compiled.
Query all report versions (IncludeAllVersions)	M		This query criterion indicates whether to include only the latest version of each report submitted to the Incomes Register during the specified query time range for changes or all report versions submitted during the specified query time range for changes.
Record schema version (QueryDataSchemaVersion)	M		The schema version according to which the record is generated.

Query criteria (SubscriptionParameters):

Data	V/M	Values	Description
.../TimespanParameter	V		Query criterion: Time range of payment date. Several time ranges of payment date (a maximum of 20) can be specified.  The record will include reports, the "Payment date or other report date" of which is within any of the time ranges specified as query criteria.
.../ParameterType		4	Time range of payment date
.../ValueParameter	V		Query criterion: Pension Insurance Act. Only one Pension Insurance Act can be specified.  The record will include only the reports containing the "Pension Insurance Act" entry specified as a query criterion. The query criterion can be used as an additional filter, if you only wish to query earnings payment reports under the "MYEL" or "YEL" pension insurance acts.  Codeset: PensionActCode.
.../ParameterType		12	Pension Insurance Act

## 5.7 Earnings payment reports – several report references

The record will include the earnings payment reports in which the Incomes Register report reference is one of the report references specified in the subscription.

The record is compiled in accordance with the **WageReportsFromIR** schema. The contents of the schema are described in the document, "Data distribution – Schemas – Earnings payment reports".

Record type specific data submitted in a record subscription comprise the following.

Primary subscription (MainSubscription) data:

Data	V/M	Values	Description
Distribution channel (DeliveryChannelCode)	M	1	SFTP
Record subscription type (SubscriptionType)	M	1	One-off subscription

Secondary subscription (Subscription) data:

Data	V/M	Values	Description
Record type (QueryDataType)	M	314	Earnings payment reports – several report references
Data access profile (QueryProfile)	M		The data user's data access profile, according to which the record is compiled.
Query all report versions (IncludeAllVersions)	M		This query criterion indicates whether to include only the latest version of each report submitted to the Incomes Register during the specified query time range for changes or all report versions submitted during the specified query time range for changes.
Record schema version (QueryDataSchemaVersion)	M		The schema version according to which the record is generated.

Query criteria (SubscriptionParameters):

Data	V/M	Values	Description
.../ValueParameter	M		Query criterion: Incomes Register report reference. Several Incomes Register report references (a maximum of 200) can be specified.  The record will include only the reports in which the "Incomes Register report reference" value is one of the query criteria specified.
.../ParameterType		17	Incomes Register report reference

## 5.8 Employer's separate reports – all payers

The record will include the employer's separate reports submitted by all payers. The record is compiled from new and changed reports submitted to the Incomes Register within a specific time range. The query can also be filtered with the reporting period of the report.

The record is compiled in accordance with the **PayerSummaryReportsFromIR** schema. The contents of the schema are described in the document, "Data distribution – Schemas – Employer's separate reports".

Record type specific data specified in a record subscription comprise the following.

Primary subscription (MainSubscription) data:

Data	V/M	Values	Description
Distribution channel (DeliveryChannelCode)	M	1	SFTP
Record subscription type (SubscriptionType)	M	1, 2	One-off subscription, Recurrent subscription
Start of the query time range for changes (ModifiedTimespanStart)	M		The query selects the report versions (new, replacement, cancellation) that have been submitted to the Incomes Register during the specified query time range for changes (Start of the query time range for changes – End of the query time range for changes).
End of the query time range for changes (ModifiedTimespanEnd)	V		Can only be specified in a one-off subscription. If the end of the query time range for changes has not been specified for a one-off subscription, the query time (date and time of query) is used as the end of the query time range. In a recurrent subscription, the end of the query time range for changes is the query time.

Secondary subscription (Subscription) data:

Data	V/M	Values	Description
Record type (QueryDataType)	M	306	Employer's separate reports – all payers
Data access profile (QueryProfile)	M		The data user's data access profile, according to which the record is compiled.
Query all report versions (IncludeAllVersions)	M		This query criterion indicates whether to include only the latest version of each report submitted to the Incomes Register during the specified query time range for changes or all report versions submitted during the specified query time range for changes.
Record schema version (QueryDataSchemaVersion)	M		The schema version according to which the record is generated.

Query criteria (SubscriptionParameters):

Data	V/M	Values	Description
.../TimespanParameter	V		Query criterion: Time range of reporting period. A maximum of 20 time ranges of reporting period can be specified.  The record will include the reports for which a reporting period has been specified that is either fully or partly within one of the time ranges of reporting period specified as query criteria.
.../ParameterType		3	Time range of reporting period



## 5.9 Employer's separate reports – several payers

The record will include the employer's separate reports submitted by the payers listed in the subscription. The record is compiled from new and changed reports submitted to the Incomes Register within a specific time range. The query can be further filtered payer-specifically with the reporting period of the report and the occupational accident insurance policy number.

The record is compiled in accordance with the **PayerSummaryReportsFromIR** schema. The contents of the schema are described in the document, "Data distribution – Schemas – Employer's separate reports".

Record type specific data specified in a record subscription comprise the following.

Primary subscription (MainSubscription) data:

Data	V/M	Values	Description
Distribution channel (DeliveryChannelCode)	M	1	SFTP
Record subscription type (SubscriptionType)	M	1, 2	One-off subscription, Recurrent subscription
Start of the query time range for changes (ModifiedTimespanStart)	M		The query selects the report versions (new, replacement, cancellation) that have been submitted to the Incomes Register during the specified query time range for changes (Start of the query time range for changes – End of the query time range for changes).
End of the query time range for changes (ModifiedTimespanEnd)	V		Can only be specified in a one-off subscription. If the end of the query time range for changes has not been specified for a one-off subscription, the query time (date and time of query) is used as the end of the query time range. In a recurrent subscription, the end of the query time range for changes is the query time.

Secondary subscription (Subscription) data:

Data	V/M	Values	Description
Record type (QueryDataType)	M	307	Employer's separate reports – several payers
Data access profile (QueryProfile)	M		The data user's data access profile, according to which the record is compiled.
Query all report versions (IncludeAllVersions)	M		This query criterion indicates whether to include only the latest version of each report submitted to the Incomes Register during the specified query time range for changes or all report versions submitted during the specified query time range for changes.
Record schema version (QueryDataSchemaVersion)	M		The schema version according to which the record is generated.

A list of the customers to include (IdCodeList):

Data	V/M	Values	Description
.../CodeListType	M	2	List of payers
.../CodeItems/CodeItem			The payers that are the query target. One CodeItem element is specified in the subscription for each payer to be included in the record.
.../IdType			Payer's identifying data
.../IdCode			Payer's identifying data
.../IdCountryCode			Payer's identifying data
.../SubscriptionParameters/TimespanParameter	V		Query criterion: Time range of reporting period. The time ranges of reporting period are specified payer-specifically, and a maximum of 20 can be specified for one payer.  The record will include the reports for which a reporting period has been specified that is either fully or partly within one of the time ranges of reporting period specified as query criteria.
.../ParameterType		3	Time range of reporting period

.../SubscriptionParameters/ValueParameter	V		<p>Query criterion: The policy number of the occupational accident insurance.</p> <p>The occupational accident insurance policy numbers are specified payer-specifically, and a maximum of 20 can be specified for one payer.</p> <p>The record will include the reports which include any of the occupational accident insurance policy numbers specified as query criteria.</p>
.../ParameterType		8	Occupational accident insurance policy number

### 5.10 Employer's separate reports – several earnings-related pension providers

The record will include the employer's separate reports in which the earnings-related pension provider code is one of the codes specified in the subscription. The record is compiled from new and changed reports submitted to the Incomes Register within a specific time range. The query can be further filtered with the reporting period of the report, in which case the filter applies to all earnings-related pension providers specified in the subscription.

The record is compiled in accordance with the **PayerSummaryReportsFromIR** schema. The contents of the schema are described in the document, "Data distribution – Schemas – Employer's separate reports".

Record type specific data specified in a record subscription comprise the following.

Primary subscription (MainSubscription) data:

Data	V/M	Values	Description
Distribution channel (DeliveryChannelCode)	M	1	SFTP
Record subscription type (SubscriptionType)	M	1, 2	One-off subscription, Recurrent subscription
Start of the query time range for changes (ModifiedTimespanStart)	M		The query selects the report versions (new, replacement, cancellation) that have been submitted to the Incomes Register during the specified query time range for changes (Start of the query time range for changes – End of the query time range for changes).
End of the query time range for changes (ModifiedTimespanEnd)	V		Can only be specified in a one-off subscription. If the end of the query time range for changes has not been specified for a one-off subscription, the query time (date and time of query) is used as the end of the query time range. In a recurrent subscription, the end of the query time range for changes is the query time.

Secondary subscription (Subscription) data:

Data	V/M	Values	Description
Record type (QueryDataType)	M	308	Employer's separate reports – several earnings-related pension providers
Data access profile (QueryProfile)	M		The data user's data access profile, according to which the record is compiled.
Query all report versions (IncludeAllVersions)	M		This query criterion indicates whether to include only the latest version of each report submitted to the Incomes Register during the specified query time range for changes or all report versions submitted during the specified query time range for changes.
Record schema version (QueryDataSchemaVersion)	M		The schema version according to which the record is generated.

Query criteria (SubscriptionParameters):

Data	V/M	Values	Description
.../ValueParameter	M		Query criterion: Earnings-related pension provider code. Several earnings-related pension provider codes (a maximum of 20) can be specified. The record will include only the reports in which the "Pension provider code" value is one of the query criteria specified.
.../ParameterType		10	Pension provider code
.../TimespanParameter	V		Query criterion: Time range of reporting period. A maximum of 20 time ranges of reporting period can be specified.  The record will include the reports for which a reporting period has been specified that is either fully or partly within one of the time ranges of reporting period specified as query criteria.
.../ParameterType		3	Time range of reporting period

Application of filtering criteria: Two earnings-related pension provider codes, a query time range for changes, and two time ranges of reporting period have been specified as the query criteria. The record will include the employer's separate reports submitted to the Incomes Register within the specified query time range for changes, where the reporting period is either fully or partly within one of the time ranges of reporting period specified as query criteria *and* where any of the earnings-related pension provider codes is one of the codes specified as query criteria.



### 5.11 Messages sent to the party

The record will include the messages where the recipient is the party specified as the query criterion. The record will include the messages saved in the Incomes Register during a specific time period.

The record is compiled in accordance with the **MessagesFromIR** schema. The contents of the schema are described in the document, "Data distribution – Schemas – Messages".

Record type specific data specified in a record subscription comprise the following.

Primary subscription (MainSubscription) data:

Data	V/M	Values	Description
Distribution channel (DeliveryChannelCode)	M	1	SFTP
Record subscription type (SubscriptionType)	M	1, 2	One-off subscription, Recurrent subscription
Start of the query time range for changes (ModifiedTimespanStart)	M		The query selects the messages that have been saved in the Incomes Register during the specified query time range for changes (Start of the query time range for changes – End of the query time range for changes).
End of the query time range for changes (ModifiedTimespanEnd)	V		Can only be specified in a one-off subscription. If the end of the query time range for changes has not been specified for a one-off subscription, the query time (date and time of query) is used as the end of the query time range. In a recurrent subscription, the end of the query time range for changes is the query time.

Secondary subscription (Subscription) data:

Data	V/M	Values	Description
Record type (QueryDataType)	M	309	Messages sent to the party
Record schema version (QueryDataSchemaVersion)	M		The schema version according to which the record is generated.

Query criteria (SubscriptionParameters):

Data	V/M	Values	Description
.../IdCodeParameter	M		Query criterion: Party One party can be specified.  The record will include the messages, where the recipient is the party specified as the query criterion.
.../ParameterType		11	Party
.../IdType			Party's identifier
.../IdCode			Party's identifier
.../IdCountryCode			Party's identifier

### 5.12 Access log data for the party's users

The record will include access log events involving the use of the Incomes Register e-service by the party's users. The record will not include log events for actions on draft-status data, such as the saving or maintaining of a message draft. The record will include the log events saved in the Incomes Register within a specific time range.

The record is compiled in accordance with the **LogDataFromIR** schema. The contents of the schema are described in the document, "Data distribution – Schemas – Log data".

Record type specific data specified in a record subscription comprise the following.

Primary subscription (MainSubscription) data:

Data	V/M	Values	Description
Distribution channel (DeliveryChannelCode)	M	1	SFTP
Record subscription type (SubscriptionType)	M	1, 2	One-off subscription, Recurrent subscription
Start of the query time range for changes (ModifiedTimespanStart)	M		The query selects the log events that have been saved in the Incomes Register within the specified query time range for changes (Start of the query time range for changes – End of the query time range for changes).
End of the query time range for changes (ModifiedTimespanEnd)	V		Can only be specified in a one-off subscription. If the end of the query time range for changes has not been specified for a one-off subscription, the query time (date and time of query) is used as the end of the query time range. In a recurrent subscription, the end of the query time range for changes is the query time.

Secondary subscription (Subscription) data:

Data	V/M	Values	Description
Record type (QueryDataType)	M	310	Access log data for the party's users
Record schema version (QueryDataSchemaVersion)	M		The schema version according to which the record is generated.

Query criteria (SubscriptionParameters):

Data	V/M	Values	Description
.../IdCodeParameter	M		Query criterion: Party One party can be specified.  The record will include those log events involving the use of the e-service, where a party represented by the user is the party specified as the query criterion.
.../ParameterType		11	Party
.../IdType			Party's identifier
.../IdCode			Party's identifier
.../IdCountryCode			Party's identifier

### 5.13 Summary of payer's earnings payment data

Sum data for the earnings payment reports submitted by the payer are distributed in this record. The record is intended for the payers, to be used in the reconciliation and checking of report data. Sum data from earnings payment reports submitted to the Incomes Register during a specific time range is calculated into the record. The query can also be filtered using the payer's suborganisation and submitter type.

The record is compiled in accordance with the **WageReportSummaryFromIR** schema. The contents of the schema are described in the document, "Data distribution – Schemas – Summary of payer's earnings payment data".

#### 5.13.1 Record subscription data: One-off subscription

Record type specific data specified in a record subscription (one-off subscription) comprise the following.

Primary subscription (MainSubscription) data:

Data	V/M	Values	Description
Distribution channel (DeliveryChannelCode)	M	1	SFTP
Record subscription type (SubscriptionType)	M	1	One-off subscription

Secondary subscription (Subscription) data:

Data	V/M	Values	Description
Record type (QueryDataType)	M	312	Summary of payer's earnings payment data
Record schema version (QueryDataSchemaVersion)	M		The schema version according to which the record is generated.

Query criteria (SubscriptionParameters):

Data	V/M	Values	Description
.../TimespanParameter	M		Query criterion: Time range of payment date. One time range of payment date with a maximum length of 12 months can be specified. The sum data is calculated from those reports, the "Payment date or other report date" of which is within the specified time range.
.../ParameterType		4	Time range of payment date
.../IdCodeParameter	M		Query criterion: Payer. One payer can be specified.
.../ParameterType		6	Payer's ID
.../ValueParameter	V/M		Query criterion: Type of payer's suborganisation's identifier. This query criterion must be specified, if the query criterion Payer's suborganisation's identifier has been specified. One value can be specified.
.../ParameterType		14	Type of payer's suborganisation's identifier.
.../Value			Codeset PayerSubOrgType.
.../ValueParameter	V/M		Query criterion: Payer's suborganisation's identifier. This query criterion must be specified, if the query criterion Type of payer's suborganisation's identifier has been specified. One value can be specified.
.../ParameterType		15	Payer's suborganisation's identifier.
.../Value			A value in the Type of payer's suborganisation's identifier codeset.
.../ValueParameter	M		Submitter type. One value can be specified.
.../ParameterType		16	Submitter type.
.../Value			Codeset ReporterType.

If the Record subscription type is **One-off subscription**, the following reports are included in the record:

- Earnings payment reports the "Payment date or other report date" of which is within the specified time range.

### 5.13.2 Record subscription type: Recurrent subscription

Record type specific data specified in a record subscription (Recurrent subscription) comprise the following.

Primary subscription (MainSubscription) data:

Data	V/M	Values	Description
Distribution channel (DeliveryChannelCode)	M	1	SFTP
Record subscription type (SubscriptionType)	M	2	Recurrent subscription

Secondary subscription (Subscription) data, Recurrent subscription:

Data	V/M	Values	Description
Record type (QueryDataType)	M	313	Summary of payer's earnings payment data
Record schema version (QueryDataSchemaVersion)	M		The schema version according to which the record is generated.

Query criteria (SubscriptionParameters):

Data	V/M	Values	Description
.../IdCodeParameter	M		Query criterion: Payer. One payer can be specified.
.../ParameterType		6	Payer's ID
.../ValueParameter	V/M		Query criterion: Type of payer's suborganisation's identifier. This query criterion must be specified, if the query criterion Payer's suborganisation's identifier has been specified. One value can be specified.
.../ParameterType		14	Type of payer's suborganisation's identifier.
.../Value			Codeset PayerSubOrgType.
.../ValueParameter	V/M		Query criterion: Payer's suborganisation's identifier. This query criterion must be specified, if the query criterion Type of payer's suborganisation's identifier has been specified. One value can be specified.
.../ParameterType		15	Payer's suborganisation's identifier.
.../Value			A value in the Type of payer's suborganisation's identifier codeset.
.../ValueParameter	M		Submitter type. One value can be specified.
.../ParameterType		16	Submitter type.
.../Value			Codeset ReporterType.

If a **Monthly schedule** has been specified in the subscription, the following reports will be included in the record:

- Earnings payment reports, the "Payment date or other report date" of which is within the month preceding the query time.

If a **Weekly schedule** has been specified in the subscription, the following reports will be included in the record:

- Earnings payment reports, the "Payment date or other report date" of which is within the most recent full week (Monday-Sunday) preceding the query time.

If a **Daily schedule** has been specified in the subscription, the following reports will be included in the record:

- Earnings payment reports, the "Payment date or other report date" of which is within the most recent full day preceding the query time.



### 5.14 Benefits payment reports – all income earners

All benefits payment reports from income earners are queried into the record. The record is compiled from new and changed reports submitted to the Incomes Register within a specific time range. The query can also be filtered with the "Payment date or other report date" field.

The record is compiled in accordance with the **BenefitReportsFromIR** schema. The contents of the schema are described in the document "Data distribution – Schemas – Benefits payment reports".

Record type specific data specified in a record subscription comprise the following.

Primary subscription (MainSubscription) data:

Data	V/M	Values	Description
Distribution channel (DeliveryChannelCode)	M	1	SFTP
Record subscription type (SubscriptionType)	M	1, 2	One-off subscription, Recurrent subscription
Start of the query time range for changes (ModifiedTimespanStart)	M		The query selects the report versions (new, replacement, cancellation) that have been submitted to the Incomes Register during the specified query time range for changes (Start of the query time range for changes – End of the query time range for changes).
End of the query time range for changes (ModifiedTimespanEnd)	V		Can only be specified in a one-off subscription. If the end of the query time range for changes has not been specified for a one-off subscription, the query time (date and time of query) is used as the end of the query time range. In a recurrent subscription, the end of the query time range for changes is the query time.

Secondary subscription (Subscription) data:

Data	V/M	Values	Description
Record type (QueryDataType)	M	315	Benefits payment reports – all income earners
Data access profile (QueryProfile)	M		The data user's data access profile, according to which the record is compiled.
Query all report versions (IncludeAllVersions)	M		This query criterion indicates whether to include only the latest version of each report submitted to the Incomes Register during the specified query time range for changes or all report versions submitted during the specified query time range for changes.
Record schema version (QueryDataSchemaVersion)	M		The schema version according to which the record is generated.

Query criteria (SubscriptionParameters):

Data	V/M	Values	Description
.../TimespanParameter	V		Query criterion: Time range of payment date. Several time ranges of payment date (a maximum of 20) can be specified.  The record will include reports, the "Payment date or other report date" of which is in any of the specified periods.
.../ParameterType		4	Time range of payment date

### 5.15 Benefits payment reports – several income earners

The record will include the benefits payment reports for the income earners listed in the subscription. The record is compiled from new and changed reports submitted to the Incomes Register within a specific time range. The query can also be filtered income earner specifically using the “Payment date or other report date” field, the earnings period and the income type.

The record is compiled in accordance with the **BenefitReportsFromIR** schema. The contents of the schema are described in the document “Data distribution – Schemas – Benefits payment reports”.

Record type specific data specified in a record subscription comprise the following.

Primary subscription (MainSubscription) data:

Data	V/M	Values	Description
Distribution channel (DeliveryChannelCode)	M	1	SFTP
Record subscription type (SubscriptionType)	M	1, 2	One-off subscription, Recurrent subscription
Start of the query time range for changes (ModifiedTimespanStart)	M		The query selects the report versions (new, replacement, cancellation) that have been submitted to the Incomes Register during the specified query time range for changes (Start of the query time range for changes – End of the query time range for changes).
End of the query time range for changes (ModifiedTimespanEnd)	V		Can only be specified in a one-off subscription. If the end of the query time range for changes has not been specified for a one-off subscription, the query time (date and time of query) is used as the end of the query time range. In a recurrent subscription, the end of the query time range for changes is the query time.

Secondary subscription (Subscription) data:

Data	V/M	Values	Description
Record type (QueryDataType)	M	316	Benefits payment reports – several income earners
Data access profile (QueryProfile)	M		The data user's data access profile, according to which the record is compiled.
Query all report versions (IncludeAllVersions)	M		This query criterion indicates whether to include only the latest version of each report submitted to the Incomes Register during the specified query time range for changes or all report versions submitted during the specified query time range for changes.
Record schema version (QueryDataSchemaVersion)	M		The schema version according to which the record is generated.

A list of the customers to include (IdCodeList):

Data	V/M	Values	Description
.../CodeListType	M	1	List of income earners
.../CodeItems/CodeItem			The income earners that are the query target. One CodeItem element is specified in the subscription for each income earner to be included in the record.
.../IdType			Income earner's identifying data
.../IdCode			Income earner's identifying data
.../IdCountryCode			Income earner's identifying data
.../SubscriptionParameters/TimespanParameter	V		Query criterion: Time range of payment date. The time ranges of payment date are specified income earner specifically, and a maximum of 20 can be specified for one income earner.  The record will include the income earner's reports, the "Payment date or other report date" of which is in any of the periods specified as query criteria.
.../ParameterType		4	Time range of payment date

.../SubscriptionParameters/TimespanParameter	V		<p>Query criterion: Time range of earnings period.</p> <p>The time ranges of earnings period are specified income earner specifically, and a maximum of 20 can be specified for one income earner.</p> <p>The record will include the income earner's reports for which an earnings period has been specified that is either fully or partly within one of the time ranges of earnings period specified as query criteria.</p>
.../ParameterType		5	Time range of earnings period
.../SubscriptionParameters/ValueParameter	V		<p>Query criterion: Income type.</p> <p>The income types are specified income earner specifically, and a maximum of 20 income types can be specified for one income earner.</p> <p>The record will include the income earner's reports which comprise any of the income types specified as a query criterion. Only the income types specified as query criteria will be queried from the reports to the record.</p>
.../ParameterType		20	Income type

An example of how to apply the query criteria:

The record will include the benefits payment reports of the income earner targeted by the query that have been submitted to the Incomes Register within the specified query time range for changes. If *both* time ranges of payment date *and* time ranges of earnings period have been specified for the income earner as filtering criteria, the record will include the benefits payment reports the "Payment date or other report date" of which is within one of the time ranges of payment date specified as a query criterion *and* the specified earnings period of which is either fully or partly within one of the time ranges of earnings period specified as a query criterion.

## 5.16 Benefits payment reports – several payers, several income earners

The record will include the benefits payment reports submitted by the payers listed in the subscription in which the income earners are those listed in the subscription. The income earners are specified in the subscription payer-specifically. The subscription can be for a record that contains, for example, the benefits paid by payer P1 to income earners I1 and I2 and the benefits paid by payer P2 to income earners I3 and I4. The record is compiled from new and changed reports submitted to the Incomes Register within a specific time range. The query can also be filtered payer-income-earner-specifically using the “Payment date or other report date” field, the earnings period and the income type.

The record is compiled in accordance with the **BenefitReportsFromIR** schema. The contents of the schema are described in the document “Data distribution – Schemas – Benefits payment reports”.

Record type specific data specified in a record subscription comprise the following.

Primary subscription (MainSubscription) data:

Data	V/M	Values	Description
Distribution channel (DeliveryChannelCode)	M	1	SFTP
Record subscription type (SubscriptionType)	M	1, 2	One-off subscription, Recurrent subscription
Start of the query time range for changes (ModifiedTimespanStart)	M		The query selects the report versions (new, replacement, cancellation) that have been submitted to the Incomes Register during the specified query time range for changes (Start of the query time range for changes – End of the query time range for changes).
End of the query time range for changes (ModifiedTimespanEnd)	V		Can only be specified in a one-off subscription. If the end of the query time range for changes has not been specified for a one-off subscription, the query time (date and time of query) is used as the end of the query time range. In a recurrent subscription, the end of the query time range for changes is the query time.

Secondary subscription (Subscription) data:

Data	V/M	Values	Description
Record type (QueryDataType)	M	317	Benefits payment reports – several payers, several income earners
Data access profile (QueryProfile)	M		The data user's data access profile, according to which the record is compiled.
Query all report versions (IncludeAllVersions)	M		This query criterion indicates whether to include only the latest version of each report submitted to the Incomes Register during the specified query time range for changes or all report versions submitted during the specified query time range for changes.
Record schema version (QueryDataSchemaVersion)	M		The schema version according to which the record is generated.

A list of the customers to include (IdCodeList):

Data	V/M	Values	Description
.../CodeListType	M	2	List of payers
.../CodeItems/CodeItem			The payer-income earner pairs that are the query target. One CodeItem element is specified in the subscription for each queried <i>payer-income earner pair</i> .
.../IdType			Payer's identifying data
.../IdCode			Payer's identifying data
.../IdCountryCode			Payer's identifying data
.../SubscriptionParameters/IdCodeParameter	M		Query criterion: Income earner. The record will include the reports submitted by the payer for the income earner.
.../ParameterType		7	Income earner
.../IdType			Income earner's identifying data

.../IdCode			Income earner's identifying data
.../IdCountryCode			Income earner's identifying data
.../SubscriptionParameters/TimespanParameter	V		<p>Query criterion: Time range of payment date.</p> <p>The time ranges of payment date are specified payer-income-earner-specifically, and a maximum of 20 can be specified for one payer-income earner pair.</p> <p>The record will include the reports, submitted by the payer for the income earner, the "Payment date or other report date" of which is in any of the periods specified as query criteria.</p>
.../ParameterType		4	Time range of payment date
.../SubscriptionParameters/TimespanParameter	V		<p>Query criterion: Time range of earnings period.</p> <p>The time ranges of earnings period are specified payer-income-earner-specifically, and a maximum of 20 can be specified for one payer-income earner pair.</p> <p>The record will include the reports submitted by the payer for the income earner for which an earnings period has been specified that is either fully or partly within one of the time ranges of earnings period specified as a query criterion.</p>
.../ParameterType		5	Time range of earnings period
.../SubscriptionParameters/ValueParameter	V		<p>Query criterion: Income type.</p> <p>The income types are specified payer-income-earner-specifically, and a maximum of 20 can be specified for one payer-income earner pair.</p> <p>The reports submitted by the payer for the income earner that have been used to determine an income type specified as a query criterion are queried to the record. Only the income types specified as query criteria will be queried from the reports to the record.</p>
.../ParameterType		20	Income type



### 5.17 Benefits payment reports – several report references

The record will include the benefits payment reports in which the Incomes Register report reference is one of the report references specified in the subscription.

The record is compiled in accordance with the **BenefitReportsFromIR** schema. The contents of the schema are described in the document “Data distribution – Schemas – Benefits payment reports”.

Record type specific data specified in a record subscription comprise the following.

Primary subscription (MainSubscription) data:

Data	V/M	Values	Description
Distribution channel (DeliveryChannelCode)	M	1	SFTP
Record subscription type (SubscriptionType)	M	1, 2	One-off subscription, Recurrent subscription
Start of the query time range for changes (ModifiedTimespanStart)	M		The query selects the report versions (new, replacement, cancellation) that have been submitted to the Incomes Register during the specified query time range for changes (Start of the query time range for changes – End of the query time range for changes).
End of the query time range for changes (ModifiedTimespanEnd)	V		Can only be specified in a one-off subscription. If the end of the query time range for changes has not been specified for a one-off subscription, the query time (date and time of query) is used as the end of the query time range. In a recurrent subscription, the end of the query time range for changes is the query time.

Secondary subscription (Subscription) data:

Data	V/M	Values	Description
Record type (QueryDataType)	M	318	Benefits payment reports – several report references
Data access profile (QueryProfile)	M		The data user's data access profile, according to which the record is compiled.
Query all report versions (IncludeAllVersions)	M		This query criterion indicates whether to include only the latest version of each report submitted to the Incomes Register during the specified query time range for changes or all report versions submitted during the specified query time range for changes.
Record schema version (QueryDataSchemaVersion)	M		The schema version according to which the record is generated.

Query criteria (SubscriptionParameters):

Data	V/M	Values	Description
.../ValueParameter	M		Query criterion: Incomes Register report reference. Several Incomes Register report references (a maximum of 200) can be specified.  The record will include only the reports in which the "Incomes Register report reference" value is one of the query criteria specified.
.../ParameterType		17	Incomes Register report reference

### 5.18 Benefits payment reports – several payers

The record will include the benefits payment reports submitted by the payers listed in the subscription. The record is compiled from new and changed reports submitted to the Incomes Register within a specific time range. The query can also be filtered payer-specifically using the “Payment date or other report date” field and the income type.

The record is compiled in accordance with the **BenefitReportsFromIR** schema. The contents of the schema are described in the document “Data distribution – Schemas – Benefits payment reports”.

Record type specific data specified in a record subscription comprise the following.

Primary subscription (MainSubscription) data:

Data	V/M	Values	Description
Distribution channel (DeliveryChannelCode)	M	1	SFTP
Record subscription type (SubscriptionType)	M	1, 2	One-off subscription, Recurrent subscription
Start of the query time range for changes (ModifiedTimespanStart)	M		The query selects the report versions (new, replacement, cancellation) that have been submitted to the Incomes Register during the specified query time range for changes (Start of the query time range for changes – End of the query time range for changes).
End of the query time range for changes (ModifiedTimespanEnd)	V		Can only be specified in a one-off subscription. If the end of the query time range for changes has not been specified for a one-off subscription, the query time (date and time of query) is used as the end of the query time range. In a recurrent subscription, the end of the query time range for changes is the query time.

Secondary subscription (Subscription) data:

Data	V/M	Values	Description
Record type (QueryDataType)	M	319	Benefits payment reports – several payers
Data access profile (QueryProfile)	M		The data user's data access profile, according to which the record is compiled.
Query all report versions (IncludeAllVersions)	M		This query criterion indicates whether to include only the latest version of each report submitted to the Incomes Register during the specified query time range for changes or all report versions submitted during the specified query time range for changes.
Record schema version (QueryDataSchemaVersion)	M		The schema version according to which the record is generated.

A list of the customers to include (IdCodeList):

Data	V/M	Values	Description
.../CodeListType	M	2	List of payers
.../CodeItems/CodeItem			The payers that are the query target. One CodeItem element is specified in the subscription for each payer to be included in the record.
.../IdType			Payer's identifying data
.../IdCode			Payer's identifying data
.../IdCountryCode			Payer's identifying data
.../SubscriptionParameters/TimespanParameter	V		Query criterion: Time range of payment date. The time ranges of payment date are specified payer-specifically, and a maximum of 20 can be specified for one payer.  The record will include the payer's reports, the “Payment date or other report date” of which is within any of the time ranges specified as query criteria.
.../ParameterType		4	Time range of payment date
.../SubscriptionParameters/ValueParameter	V		Query criterion: Income type.

			<p>The income types are specified payer-specifically, and a maximum of 20 can be specified for one payer.</p> <p>The record will include the payer's reports which include any of the income types specified as a query criterion. Only the income types specified as query criteria will be queried from the reports to the record.</p>
.../ParameterType		20	Income type





## 6 RECORDS DISTRIBUTED VIA THE REAL-TIME WEB SERVICE INTERFACE

This section describes the records distributed from the Incomes Register via the real-time Web Service interface.

The general record query criteria and their application are described in connection with the introduction of the records. In addition to the general query criteria, the query process is controlled by party-specific conditions and additional limitations (for example, data access rights related to age limits) which are described in a separate document.

The "V/M" column in the data tables indicates whether a data item or query criterion is voluntary (V) or mandatory (M) in a service request concerning the record in question. The service request schema is described in more detail in the document, "Data delivery – Schemas – Service request". In this description, only those data elements of the schema that are essential to understanding the query criteria are presented.

The order of query criteria used in the request messages of the real-time Web Service services is presented in its logical order in this document. In the actual XML-format request message, they must be in the order according to the XML schema. The order by parameter types is then the following:

- ValueParameter
- TimespanParameter
- TimespanTimeParameter
- IdCodeParameter

### 6.1 Earnings payment reports – one income earner

The service returns the earnings payment reports of one income earner. The record is compiled from new and changed reports submitted to the Incomes Register within a specific time range. The query can also be filtered with the Payment date or other report date, the earnings period and the absence time range.

The service returns the data in compliance with the **WageReportsFromIR** schema. The contents of the schema are described in the document, "Data distribution – Schemas – Earnings payment reports".

Record type specific data specified in a service request comprise the following.

Service request (DataRequest) data:

Data	V/M	Values	Description
Record type (QueryDataType)	M	400	Earnings payment reports – one income earner
Data access profile (QueryProfile)	M		The data user's data access profile, according to which the record is compiled.
Query all report versions (IncludeAllVersions)	M		This query criterion indicates whether to include only the latest version of each report submitted to the Incomes Register during the specified query time range for changes or all report versions submitted during the specified query time range for changes.

Query criteria (DataRequestParameters), the order of parameters is described in the introduction of Section 6:

Data	V/M	Values	Description
.../IdCodeParameter	M		Query criterion: Income earner. Only one income earner can be specified.
.../ParameterType		7	Income earner
.../IdType			Income earner's identifying data
.../IdCode			Income earner's identifying data
.../IdCountryCode			Income earner's identifying data

.../TimespanTimeParameter	M		Query criterion: Query time range for changes. Only one query time range for changes can be specified. The query selects the report versions (new, replacement, cancellation) that have been submitted to the Incomes Register during the specified query time range for changes.
.../ParameterType		2	Query time range for changes
.../TimespanParameter	V		Query criterion: Time range of payment date. Several time ranges of payment date (a maximum of 20) can be specified.  The record will include reports, the "Payment date or other report date" of which is within any of the time ranges specified as query criteria.
.../ParameterType		4	Time range of payment date
.../TimespanParameter	V		Query criterion: Time range of earnings period. A maximum of 20 time ranges of earnings period can be specified.  The record will include the reports for which an earnings period has been specified that is either fully or partly within one of the time ranges of earnings period specified as query criteria.
.../ParameterType		5	Time range of earnings period
.../TimespanParameter	V		Query criterion: Absence time range. A maximum of 20 absence time ranges can be specified.  The record will include the reports in which one of the following time ranges is either fully or partly within one of the absence time ranges specified as query criteria. <ul style="list-style-type: none"> <li>• Start date of the time period for reporting absences - End date of the time period for reporting absences</li> <li>• Unpaid absence: Start date of the period of absence - End date of the period of absence</li> <li>• Paid absence: Start date of the period of absence - End date of the period of absence</li> </ul>
.../ParameterType		18	Absence time range

#### Application of query criteria:

The record will include the earnings payment reports of the income earner targeted by the query, which have been submitted to the Incomes Register within the specified query time range for changes. If *both* time ranges of payment date *and* time ranges of earnings period have been specified for the income earner as filtering criteria, the record will include the earnings payment reports, the "Payment date or other report date" of which is within one of the time ranges of payment date specified as query criteria *and* the specified earnings period of which is either fully or partly within one of the time ranges of earnings periods specified as query criteria.

The Absence time range query criterion is correspondingly combined with the other query criteria, i.e., it is combined with the other specified query criteria as an additional filter.

## 6.2 Earnings payment reports – one payer

The service returns the earnings payment reports submitted by one payer. The record is compiled from new and changed reports submitted to the Incomes Register within a specific time range. The query can also be filtered with the "Payment date or other report date" field and the occupational accident insurance policy number.

The service returns the data in compliance with the **WageReportsFromIR** schema. The contents of the schema are described in the document, "Data distribution – Schemas – Earnings payment reports".

Record type specific data specified in a service request comprise the following.

Service request (DataRequest) data:

Data	V/M	Values	Description
Record type (QueryDataType)	M	401	Earnings payment reports – one payer
Data access profile (QueryProfile)	M		The data user's data access profile, according to which the record is compiled.
Query all report versions (IncludeAllVersions)	M		This query criterion indicates whether to include only the latest version of each report submitted to the Incomes Register during the specified query time range for changes or all report versions submitted during the specified query time range for changes.

Query criteria (DataRequestParameters), the order of parameters is described in the introduction of Section 6:

Data	V/M	Values	Description
.../IdCodeParameter	M		Query criterion: Payer. One payer can be specified.
.../ParameterType		6	Payer
.../IdType			Payer's identifying data
.../IdCode			Payer's identifying data
.../IdCountryCode			Payer's identifying data
.../TimespanTimeParameter	M		Query criterion: Query time range for changes. Only one query time range for changes can be specified. The query selects the report versions (new, replacement, cancellation) that have been submitted to the Incomes Register during the specified query time range for changes.
.../ParameterType		2	Query time range for changes
.../TimespanParameter	V		Query criterion: Time range of payment date. Several time ranges of payment date (a maximum of 20) can be specified.  The record will include reports, the "Payment date or other report date" of which is within any of the time ranges specified as query criteria.
.../ParameterType		4	Time range of payment date
.../ValueParameter	V		Query criterion: The policy number of the occupational accident insurance. Several occupational accident insurance policy numbers (a maximum of 20) can be specified.  The record will include the reports which include any of the occupational accident insurance policy numbers specified as query criteria.
.../ParameterType		8	Occupational accident insurance policy number

Application of filtering criteria: The payer, query time range for changes, two separate time ranges of payment dates and the occupational accident insurance policy number have been specified as the query criteria. The record will include the earnings payment reports submitted by the specified payer within the specified query time range for

changes where the "Payment date or other report date" is within either of the specified time ranges of payment date and that include the occupational accident insurance policy number specified as a query criterion.



### 6.3 Earnings payment reports – one payer, one income earner

The service returns the earnings payment reports submitted by one payer for one income earner. The record is compiled from new and changed reports submitted to the Incomes Register within a specific time range. The query can also be filtered by "Payment date or other report date", the earnings period, the absence time range and the occupational accident insurance policy number.

The service returns the data in compliance with the **WageReportsFromIR** schema. The contents of the schema are described in the document "Data distribution – Schemas – Earnings payment reports".

Record type specific data specified in a service request comprise the following.

Service request (DataRequest) data:

Data	V/M	Value s	Description
Record type (QueryDataType)	M	406	Earnings payment reports – one payer, one income earner
Data access profile (QueryProfile)	M		The data user's data access profile, according to which the record is compiled.
Query all report versions (IncludeAllVersions)	M		This query criterion indicates whether to include only the latest version of each report submitted to the Incomes Register during the specified query time range for changes or all report versions submitted during the specified query time range for changes.

Query criteria (DataRequestParameters), the order of parameters is described in the introduction of Section 6:

Data	V/M	Values	Description
.../IdCodeParameter	M		Query criterion: Payer. One payer can be specified.
.../ParameterType		6	Payer
.../IdType			Payer's identifying data
.../IdCode			Payer's identifying data
.../IdCountryCode			Payer's identifying data
.../IdCodeParameter	M		Query criterion: Income earner. Only one income earner can be specified.
.../ParameterType		7	Income earner
.../IdType			Income earner's identifying data
.../IdCode			Income earner's identifying data
.../IdCountryCode			Income earner's identifying data
.../TimespanTimeParameter	M		Query criterion: Query time range for changes. Only one query time range for changes can be specified. The query selects the report versions (new, replacement, cancellation) that have been submitted to the Incomes Register during the specified query time range for changes.
.../ParameterType		2	Query time range for changes
.../TimespanParameter	V		Query criterion: Time range of payment date. Several time ranges of payment date (a maximum of 20) can be specified.  The record will include reports, the "Payment date or other report date" of which is within any of the time ranges specified as query criteria.
.../ParameterType		4	Time range of payment date
.../TimespanParameter	V		Query criterion: Time range of earnings period. A maximum of 20 time ranges of earnings period can be specified.  The record will include the reports for which an earnings period has been specified that is either fully or partly within one of the time ranges of earnings period specified as query criteria.

.../ParameterType		5	Time range of earnings period
.../TimespanParameter	V		<p>Query criterion: Absence time range. A maximum of 20 absence time ranges can be specified.</p> <p>The record will include the reports in which one of the following time ranges is either fully or partly within one of the absence time ranges specified as query criteria.</p> <ul style="list-style-type: none"> <li>• Start date of the time period for reporting absences - End date of the time period for reporting absences</li> <li>• Unpaid absence: Start date of the period of absence - End date of the period of absence</li> <li>• Paid absence: Start date of the period of absence - End date of the period of absence</li> </ul>
.../ParameterType		18	Absence time range
.../ValueParameter	V		<p>Query criterion: Occupational accident insurance policy number. The occupational accident insurance policy numbers are specified payer-specifically, and a maximum of 20 can be specified for one payer.</p> <p>The record will include the reports which include any of the occupational accident insurance policy numbers specified as query criteria.</p>
.../ParameterType		8	Occupational accident insurance policy number

Application of filtering criteria, for example: A payer, an income earner, a query time range for changes and two separate time ranges of payment date have been entered as the query criterion. The record will include the earnings payment reports submitted by the specified payer within the specified query time range for changes for the specified income earner in which the "Payment date or other report date" is in one of the specified time ranges of payment date.



## 6.4 Earnings payment reports – one pension policy number

The service will return the earnings payment reports related to a single pension policy number. The record is compiled from new and changed reports submitted to the Incomes Register within a specific time range. The query can also be filtered with the "Payment date or other report date" field.

The service returns the data in compliance with the **WageReportsFromIR** schema. The contents of the schema are described in the document, "Data distribution – Schemas – Earnings payment reports".

Record type specific data specified in a service request comprise the following.

Service request (DataRequest) data:

Data	V/M	Values	Description
Record type (QueryDataType)	M	402	Earnings payment reports – one earnings-related pension policy number
Data access profile (QueryProfile)	M		The data user's data access profile, according to which the record is compiled.
Query all report versions (IncludeAllVersions)	M		This query criterion indicates whether to include only the latest version of each report submitted to the Incomes Register during the specified query time range for changes or all report versions submitted during the specified query time range for changes.

Query criteria (DataRequestParameters), the order of parameters is described in the introduction of Section 6:

Data	V/M	Values	Description
.../ValueParameter	M		Query criterion: Earnings-related pension policy number. One earnings-related pension policy number can be specified. The record will include only the reports where the income earner's pension policy number has been specified as a query criterion.
.../ParameterType		9	Earnings-related pension policy number
.../TimespanTimeParameter	M		Query criterion: Query time range for changes. Only one query time range for changes can be specified. The query selects the report versions (new, replacement, cancellation) that have been submitted to the Incomes Register during the specified query time range for changes.
.../ParameterType		2	Query time range for changes
.../TimespanParameter	V		Query criterion: Time range of payment date. Several time ranges of payment date (a maximum of 20) can be specified.  The record will include reports, the "Payment date or other report date" of which is in any of the specified periods.
.../ParameterType		4	Time range of payment date

Application of filtering criteria: An earnings-related pension policy number, a query time range for changes and two separate time ranges of payment dates have been entered as the query criteria. The record will include the earnings payment reports submitted with the specified pension policy number and within the specified query time range for changes, where the "Payment date or other report date" is in one of the specified time ranges of payment date.

## 6.5 Employer's separate reports – one payer

The service returns the employer's separate reports submitted by one payer. The record is compiled from new and changed reports submitted to the Incomes Register within a specific time range. The query can be further filtered with the reporting period of the report and the occupational accident insurance policy number.

The service returns the data in compliance with the **PayerSummaryReportsFromIR** schema. The contents of the schema are described in the document, "Data distribution – Schemas – Employer's separate reports".

Record type specific data specified in a service request comprises the following.

Service request (DataRequest) data:

Data	V/M	Values	Description
Record type (QueryDataType)	M	403	Employer's separate reports – one payer
Data access profile (QueryProfile)	M		The data user's data access profile, according to which the record is compiled.
Query all report versions (IncludeAllVersions)	M		This query criterion indicates whether to include only the latest version of each report submitted to the Incomes Register during the specified query time range for changes or all report versions submitted during the specified query time range for changes.

Query criteria (DataRequestParameters), the order of parameters is described in the introduction of Section 6:

Data	V/M	Values	Description
.../IdCodeParameter	M		Query criterion: Payer. One payer can be specified.
.../ParameterType		6	Payer
.../IdType			Payer's identifying data
.../IdCode			Payer's identifying data
.../IdCountryCode			Payer's identifying data
.../TimespanTimeParameter	M		Query criterion: Query time range for changes. Only one query time range for changes can be specified. The query selects the report versions (new, replacement, cancellation) that have been submitted to the Incomes Register during the specified query time range for changes.
.../ParameterType		2	Query time range for changes
.../TimespanParameter	V		Query criterion: Time range of reporting period. A maximum of 20 time ranges of reporting period can be specified.  The record will include the reports for which a reporting period has been specified that is either fully or partly within one of the time ranges of reporting period specified as query criteria.
.../ParameterType		3	Time range of reporting period
.../ValueParameter	V		Query criterion: The policy number of the occupational accident insurance. Several occupational accident insurance policy numbers (a maximum of 20) can be specified.  The record will include the reports which include any of the occupational accident insurance policy numbers specified as query criteria.
.../ParameterType		8	Occupational accident insurance policy number

Application of filtering criteria: The payer, query time range for changes, time range of reporting period and the occupational accident insurance policy number have been specified as the query criteria. The record will include the reports submitted by the specified payer within the specified query time range for changes, where the reporting



period is either fully or partly within the time range of reporting period specified as a query criterion and that include the occupational accident insurance policy number specified as a query criterion.



## 6.6 Employer's separate reports – one earnings-related pension policy number

The service will return the employer's separate reports related to a single earnings-related pension policy number. The record is compiled from new and changed reports submitted to the Incomes Register within a specific time range. The query can also be filtered with the reporting period of the report.

The service returns the data in compliance with the **PayerSummaryReportsFromIR** schema. The contents of the schema are described in the document, "Data distribution – Schemas – Employer's separate reports".

Record type specific data specified in a service request comprises the following.

Service request (DataRequest) data:

Data	V/M	Values	Description
Record type (QueryDataType)	M	404	Employer's separate reports – one earnings-related pension policy number
Data access profile (QueryProfile)	M		The data user's data access profile, according to which the record is compiled.
Query all report versions (IncludeAllVersions)	M		This query criterion indicates whether to include only the latest version of each report submitted to the Incomes Register during the specified query time range for changes or all report versions submitted during the specified query time range for changes.

Query criteria (DataRequestParameters), the order of parameters is described in the introduction of Section 6:

Data	V/M	Values	Description
.../ValueParameter	M		Query criterion: Earnings-related pension policy number. One earnings-related pension policy number can be specified.  The record will include the employer's separate reports, where one of the earnings-related pension policy numbers specified by the payer is a number specified as a query criterion.
.../ParameterType		9	Earnings-related pension policy number
.../TimespanTimeParameter	M		Query criterion: Query time range for changes. Only one query time range for changes can be specified.  The query selects the report versions (new, replacement, cancellation) that have been submitted to the Incomes Register during the specified query time range for changes.
.../ParameterType		2	Query time range for changes
.../TimespanParameter	V		Query criterion: Time range of reporting period. A maximum of 20 time ranges of reporting period can be specified.  The record will include the reports for which a reporting period has been specified that is either fully or partly within one of the time ranges of reporting period specified as query criteria.
.../ParameterType		3	Time range of reporting period

Application of filtering criteria: The earnings-related pension policy number, query time range for changes and time range of reporting period have been specified as query criteria. The record will include the employer's separate reports submitted within the specified query time range for changes, where the reporting period is either fully or partly within the time range of reporting period specified as a query criterion and where any of the earnings-related pension policy numbers specified by the payer is a number specified as a query criterion.



## 6.7 Messages sent to the party

The service returns the messages where the recipient is a party specified as a query criterion. The record will include the messages saved in the Incomes Register during a specific time period.

The service returns the data in compliance with the **MessagesFromIR** schema. The contents of the schema are described in the document, "Data distribution – Schemas – Messages".

Record type specific data specified in a service request comprise the following.

Data	V/M	Values	Description
Record type (QueryDataType)	M	405	Messages sent to the party

Query criteria (DataRequestParameters), the order of parameters is described in the introduction of Section 6:

Data	V/M	Values	Description
.../IdCodeParameter	M		Query criterion: Party One party can be specified. The record will include those messages in which the recipient is the party specified as the query criterion.
.../ParameterType		11	Party
.../IdType			Party's identifier
.../IdCode			Party's identifier
.../IdCountryCode			Party's identifier
.../TimespanTimeParameter	M		Query criterion: Query time range for changes. Only one query time range for changes can be specified.  The query selects the messages saved in the Incomes Register during the specified query time range for changes.
.../ParameterType		2	Query time range for changes



## 6.8 Benefits payment reports – one income earner

The service returns the benefits payment reports of one income earner. The record is compiled from new and changed reports submitted to the Incomes Register within a specific time range. The query can also be filtered using the "Payment date or other report date" field, the earnings period and the income type.

The service returns the data in compliance with the **BenefitReportsFromIR** schema. The contents of the schema are described in the document "Data distribution – Schemas – Benefits payment reports".

Record type specific data specified in a service request comprise the following.

Service request (DataRequest) data:

Data	V/M	Values	Description
Record type (QueryDataType)	M	407	Benefits payment reports – one income earner
Data access profile (QueryProfile)	M		The data user's data access profile, according to which the record is compiled.
Query all report versions (IncludeAllVersions)	M		This query criterion indicates whether to include only the latest version of each report submitted to the Incomes Register during the specified query time range for changes or all report versions submitted during the specified query time range for changes.

Query criteria (DataRequestParameters), the order of parameters is described in the introduction of Section 6:

Data	V/M	Values	Description
.../IdCodeParameter	M		Query criterion: Income earner. Only one income earner can be specified.
.../ParameterType		7	Income earner
.../IdType			Income earner's identifying data
.../IdCode			Income earner's identifying data
.../IdCountryCode			Income earner's identifying data
.../TimespanTimeParameter	M		Query criterion: Query time range for changes. Only one query time range for changes can be specified. The query selects the report versions (new, replacement, cancellation) that have been submitted to the Incomes Register during the specified query time range for changes.
.../ParameterType		2	Query time range for changes
.../TimespanParameter	V		Query criterion: Time range of payment date. Several time ranges of payment date (a maximum of 20) can be specified.  The record will include reports, the "Payment date or other report date" of which is within any of the time ranges specified as query criteria.
.../ParameterType		4	Time range of payment date
.../TimespanParameter	V		Query criterion: Time range of earnings period. A maximum of 20 time ranges of earnings period can be specified.  The record will include the reports for which an earnings period has been specified that is either fully or partly within one of the time ranges of earnings period specified as query criteria.
.../ParameterType		5	Time range of earnings period
.../ValueParameter	V		Query criterion: Income type. A maximum of 20 income types can be specified.  The record will include the reports which include any of the income types specified as a query criterion. Only the income types specified as query criteria will be queried from the reports to the record.
.../ParameterType		20	Income type

An example of how to apply the query criteria:

The record will include the benefits payment reports of the income earner targeted by the query that have been submitted to the Incomes Register within the specified query time range for changes. If *both* time ranges of payment date *and* time ranges of earnings period have been specified for the income earner as filtering criteria, the record will include the benefits payment reports the “Payment date or other report date” of which is within one of the time ranges of payment date specified as a query criterion *and* the specified earnings period of which is either fully or partly within one of the time ranges of earnings period specified as a query criterion.

## 6.9 Benefits payment reports – one payer, one income earner

The service returns the benefits payment reports submitted by one payer for one income earner. The record is compiled from new and changed reports submitted to the Incomes Register within a specific time range. The query can also be filtered using the "Payment date or other report date" field, the earnings period and the income type.

The service returns the data in compliance with the **BenefitReportsFromIR** schema. The contents of the schema are described in the document "Data distribution – Schemas – Benefits payment reports".

Record type specific data specified in a service request comprise the following.

Service request (DataRequest) data:

Data	V/M	Values	Description
Record type (QueryDataType)	M	408	Benefits payment reports – one payer, one income earner
Data access profile (QueryProfile)	M		The data user's data access profile, according to which the record is compiled.
Query all report versions (IncludeAllVersions)	M		This query criterion indicates whether to include only the latest version of each report submitted to the Incomes Register during the specified query time range for changes or all report versions submitted during the specified query time range for changes.

Query criteria (DataRequestParameters), the order of parameters is described in the introduction of Section 6:

Data	V/M	Values	Description
.../IdCodeParameter	M		Query criterion: Payer. One payer can be specified.
.../ParameterType		6	Payer
.../IdType			Payer's identifying data
.../IdCode			Payer's identifying data
.../IdCountryCode			Payer's identifying data
.../IdCodeParameter	M		Query criterion: Income earner. Only one income earner can be specified.
.../ParameterType		7	Income earner
.../IdType			Income earner's identifying data
.../IdCode			Income earner's identifying data
.../IdCountryCode			Income earner's identifying data
.../TimespanTimeParameter	M		Query criterion: Query time range for changes. Only one query time range for changes can be specified. The query selects the report versions (new, replacement, cancellation) that have been submitted to the Incomes Register during the specified query time range for changes.
.../ParameterType		2	Query time range for changes
.../TimespanParameter	V		Query criterion: Time range of payment date. Several time ranges of payment date (a maximum of 20) can be specified.  The record will include reports, the "Payment date or other report date" of which is within any of the time ranges specified as query criteria.
.../ParameterType		4	Time range of payment date
.../TimespanParameter	V		Query criterion: Time range of earnings period. A maximum of 20 time ranges of earnings period can be specified.  The record will include the reports for which an earnings period has been specified that is either fully or partly within one of the time ranges of earnings period specified as query criteria.
.../ParameterType		5	Time range of earnings period
.../ValueParameter	V		Query criterion: Income type.

			<p>A maximum of 20 income types can be specified.</p> <p>The record will include the reports which include any of the income types specified as a query criterion. Only the income types specified as query criteria will be queried from the reports to the record.</p>
.../ParameterType		20	Income type

An example of how to apply the filtering criteria: A payer, an income earner, a query time range for changes and two separate time ranges of payment date have been entered as the query criterion. The record will include the benefits payment reports submitted by the specified payer within the specified query time range for changes for the specified income earner in which the "Payment date or other report date" is in one of the specified time ranges of payment date.

## 6.10 Benefits payment reports – one report reference

The service will return the benefits payment report that includes the Incomes Register report reference specified as the query criterion.

The service returns the data in compliance with the **BenefitReportsFromIR** schema. The contents of the schema are described in the document “Data distribution – Schemas – Benefits payment reports”.

Record type specific data specified in a service request comprise the following.

Service request (DataRequest) data:

Data	V/M	Values	Description
Record type (QueryDataType)	M	409	Benefits payment reports – one report reference
Data access profile (QueryProfile)	M		The data user's data access profile, according to which the record is compiled.
Query all report versions (IncludeAllVersions)	M		This query criterion indicates whether to include only the latest version of each report submitted to the Incomes Register during the specified query time range for changes or all report versions submitted during the specified query time range for changes.

Query criteria (DataRequestParameters), the order of parameters is described in the introduction of Section 6:

Data	V/M	Values	Description
.../TimespanTimeParameter	M		Query criterion: Query time range for changes. Only one query time range for changes can be specified. The query selects the report versions (new, replacement, cancellation) that have been submitted to the Incomes Register during the specified query time range for changes.
.../ParameterType		2	Query time range for changes
.../ValueParameter	M		Query criterion: Incomes Register report reference. Only one Incomes Register report reference can be specified.  The report that includes the “Incomes Register report reference” specified as the query criterion will be queried to the record.
.../ParameterType		17	Incomes Register report reference

